



2/3/2025

# RUGBY GOALS RANGE

Installation, Operation &  
Maintenance Manual

**PLAY HARD SPORTS EQUIPMENT**

13 Alex Fisher Drive  
Burleigh Heads, QLD 4220

## Contents

---

Introduction.....	2
About the LU Series.....	2
Certificate of Compliance:.....	3
Safety Information for the Installer:.....	4
Important Safety Information .....	4
Assembly Precautions .....	4
Site Specific Precautions: .....	4
Installation Instructions.....	5
Assembly Diagram .....	6
1.    LU9: 9 Meters High Goals .....	6
2.    LU12: 12 Meters High Goals .....	8
3.    LU16: 16 Meters High Goals .....	11
Maintenance: .....	14
Safety Guidelines (Usage).....	14
Warranty Certificate:.....	15

## Introduction

Thank you for choosing the LU Series Rugby Goal Posts from Play Hard Sports Equipment Australia. Our goalposts are designed to provide durability, stability, and top performance for rugby fields. This manual will guide you through assembly, installation, and maintenance to ensure optimal use of your new goalposts.

### About the LU Series

The LU Series Rugby Goals are structurally designed and manufactured by Play Hard Sports Equipment using Structural-Grade Aluminium. All the materials used in our products have been locally sourced. Standard Goals are available at 9m, 12m, and 16m heights for school and club use. We supply 18m high premium Goals designed for use in Stadiums. All goals are supplied with a crossbar and clamps to set them at a height of 3 meters.

All goals of 9m height or below are supplied with Ground Sleeves and caps and all goals 12m or higher are provided with hinged ground spigots and a footing cage for easy installation. The hinged spigot goals are supplied with footing covering the base of the footing.

**Table 1: LU9 series product specification**

Series	Goal Height	Size (OD)	Base Detail	Footing Details
LU9	9 meters	88.9 & 76.2	Ground Sleeve	450 Dia x 1200 Deep, No Footing Cage
LU12	12 meters	127	Hinged Spigot	600 Dia x 1850 Deep, with Footing Cage
LU16	16 meters	127	Hinged Spigot	600 Dia x 1850 Deep, with Footing Cage
LU18	18 meters	168,152,127 & 100	Hinged Spigot	600 Dia x 1850 Deep, with Footing Cage



Fig: LU18 Rugby Goal (CBUS Stadium, Robina)

Apart from our standard product range, we offer custom goal sizes based on site-specific requirements. Please contact our team for further details.

Padding is available as an option for each of our goals.

- LP20: Suitable for LU9 or lower
- LP20/4: Suitable for LU12/LU16/LU18

13 Alex Fisher Drive, Burleigh Heads, QLD 4220 (Australia)

Ph: 1300 851 518 | +61 7 5593 4494

Email: [email@playhardsports.com.au](mailto:email@playhardsports.com.au) | W: [www.playhardsports.com.au](http://www.playhardsports.com.au)

## Certificate of Compliance:

All our Goals have been structurally designed and are made using structural grade aluminium (6005A or 6082). All the workmanship is completed following the relevant Australian Standards. Our Products comply with the following Australian Standards.

1. AS/NZS 4100:1998 Steel Structures
2. AS/NZS 1554.1:2014 Welding of steel structures
3. AS/NZS 1664 Aluminium structures
4. AS/NZS 1665:2004 Welding of aluminium structures
5. AS/NZS 2312.1:2017 Guide to the protection of structural steel against atmospheric corrosion by the use of protective coatings
6. AS/NZS 2311:2017 Guide to the paintings of buildings
7. AS/NZS 4680:2006 Hot-dip galvanized (Zinc) coatings on fabricated ferrous articles

All our products are designed and manufactured here in Australia.



## Safety Information for the Installer:

### Important Safety Information

- **Read the Manual:** Ensure you read this manual in full before beginning assembly or installation.
- **Supervision:** Children should be supervised around the goalposts during and after installation.
- **Wear Safety Gear:** Always wear appropriate safety gear during assembly and installation.
- **Avoid Electrical Hazards:** Keep electrical tools away from the goalposts and ensure the work area is dry.

### Assembly Precautions

- **Two-Person Job:** Assembly requires at least two people to ensure safety and accuracy.
- **Check Parts:** Verify all parts are present and undamaged before starting assembly.
- **Level Ground:** Assemble on a flat surface to avoid instability.

### Site Specific Precautions:

- Before commencing any groundwork, please survey the ground/field for underground electrical, water, or sewage lines and check for overhead electrical lines.
- It is advised that the soil is tested to know its strength. All our Goalposts have been structurally designed to suit 'A', 'S' & 'M' Soils per AS2870. The contractors/installers must notify Play Hard Sports Equipment of any changes to the site specification. All other soil sites would require site-specific footing and slab engineering design.
- The concrete must be of a minimum 20 MPA, with a slump of 80 – 100 mm, and a maximum aggregate of size 20mm.
- Let the concrete set for at least 4 days before commencing further work.

## Installation Instructions

### 1. Site Preparation:

- Before commencing any groundwork, please survey the ground/field for underground electrical, water, or sewage lines and check for overhead electrical lines.
- It is advised that the soil is tested to know its strength. All our Goalposts have been structurally designed to suit 'A', 'S' & 'M' Soils per AS2870. The contractors/installers must notify Play Hard Sports Equipment of any changes to the site specification. All other soil sites would require site-specific footing and slab engineering design.

### 2. Ground Sleeve Installation (LU9 Series)

- Bore Drill a 450 mm diameter and 1200 mm Deep hole.
- Insert the Ground Sleeves and use a spirit level to ensure it is straight, at level with the playing field, and centred to the hole.
- Pour the concrete into the hole. *(Prevent any concrete from getting inside the ground sleeve)*
- The concrete must be of a minimum 20 MPA, with a slump of 80 – 100 mm, and a maximum aggregate of size 20mm.
- Let the concrete set for at least 4 days before commencing further work.

### 3. Hinged Spigot Installation (LU12/LU16/LU18)

- Bore Drill a 600 mm diameter and 1850 mm Deep hole.
- Insert the footing cage and use the supplied template and a spirit level to ensure it is straight.
- Pour the concrete into the hole. The concrete must be of a minimum 20 MPA, with a slump of 80 – 100 mm, and a maximum aggregate of size 20mm.
- Let the concrete set for at least 4 days before commencing further work.

### 4. Post Installation

- For multi-section posts, connect extensions using the internal sleeve system.
- Attach the crossbar to the uprights using the provided clamps.
- Raise the assembled goalpost and secure it to the ground sleeve or hinged spigot. Refer to Individual Assembly Instructions for each model for detailed assembly instructions.
- Check all connections and ensure the posts are plumb.

### 5. Add Padding:

- Attach the padding to the posts if available. Even though the padding is optional, it is highly recommended to use a post padding for safety reasons.
- Ensure padding is firmly in place and covers all metal surfaces to the required height.

# Assembly Diagram

## 1. LU9: 9 Meters High Goals

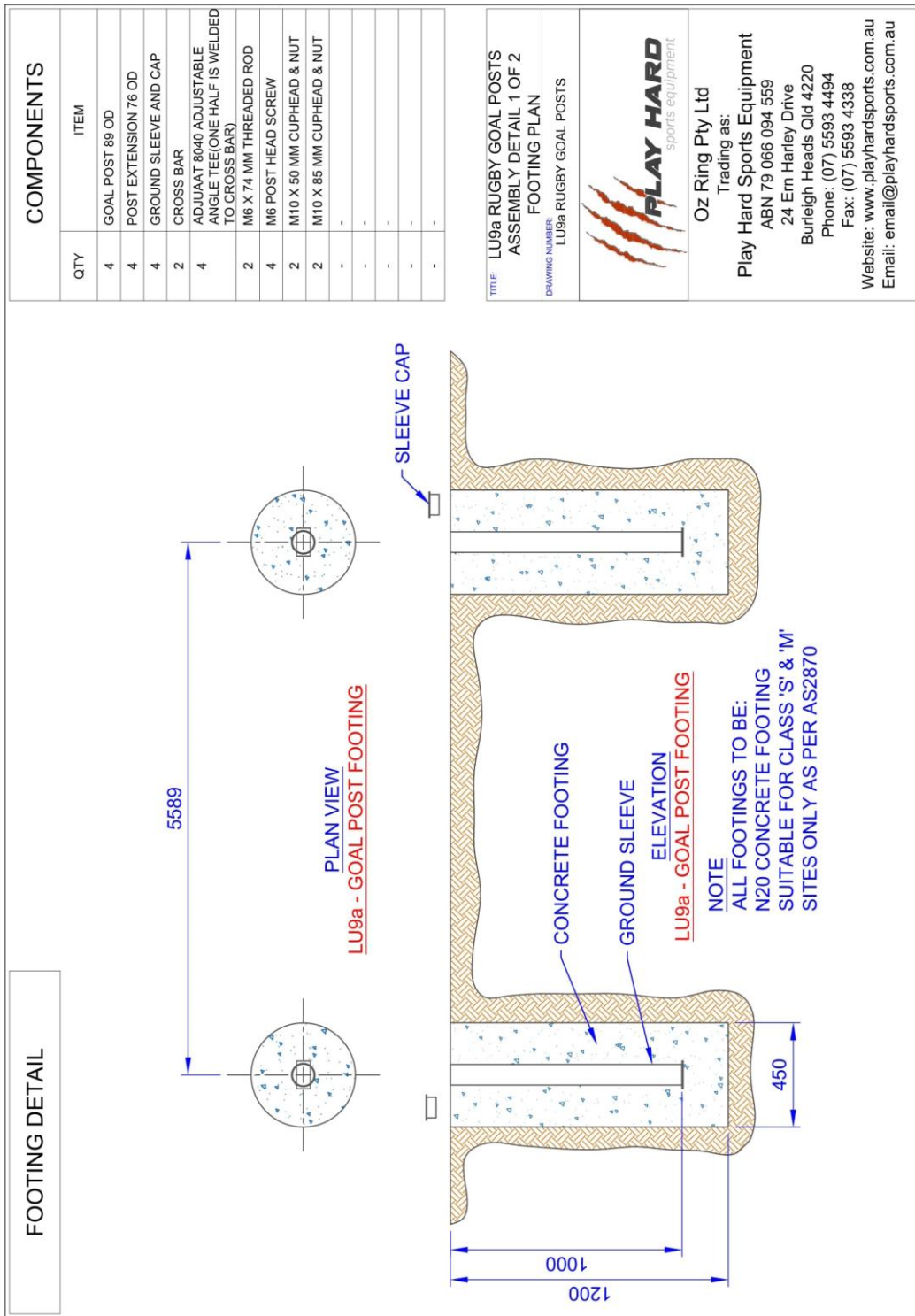


Figure 1: LU9 Footing Plan

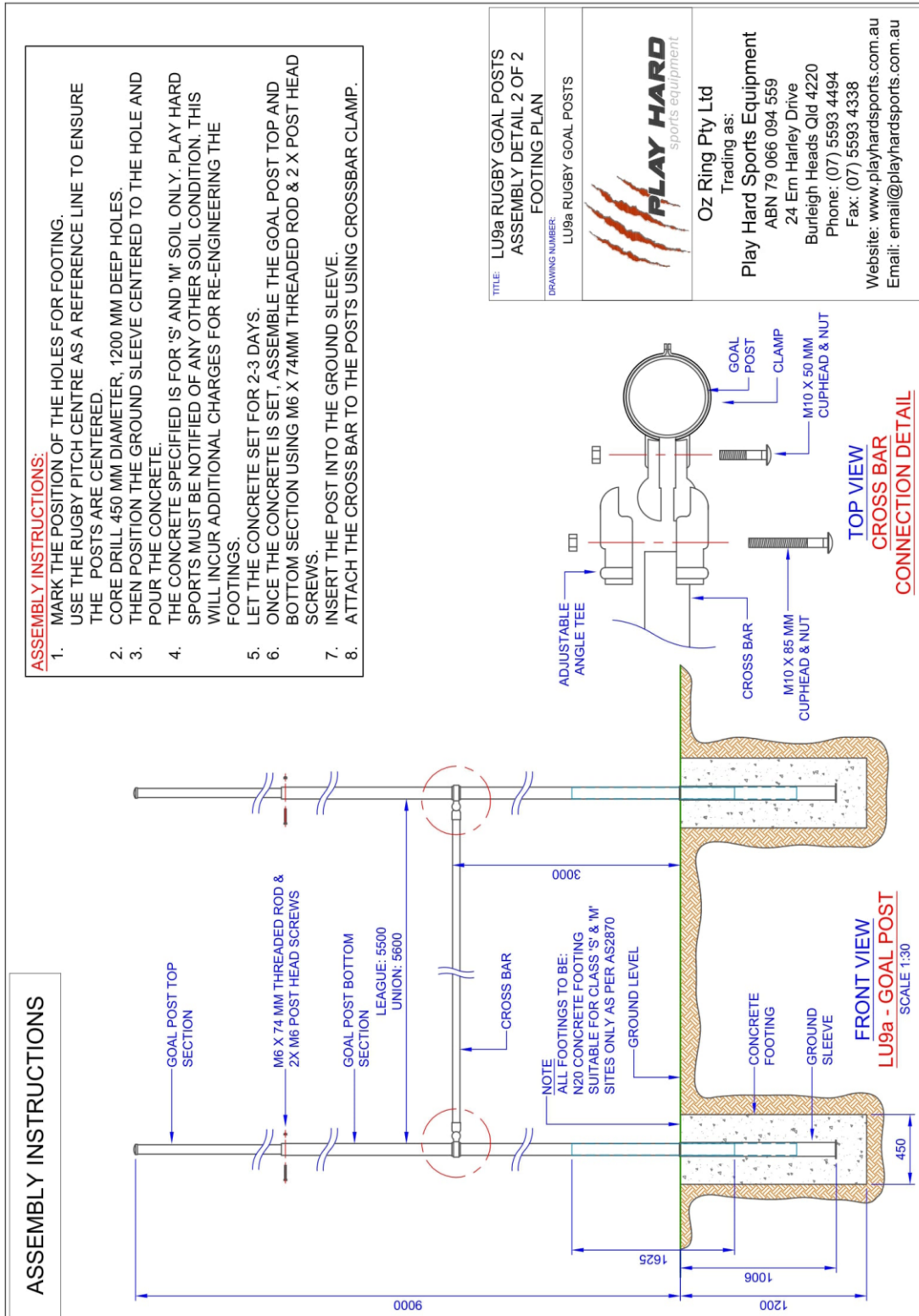


Figure 2: LU9 Assembly Instructions



## 2. LU12: 12 Meters Blue Goals

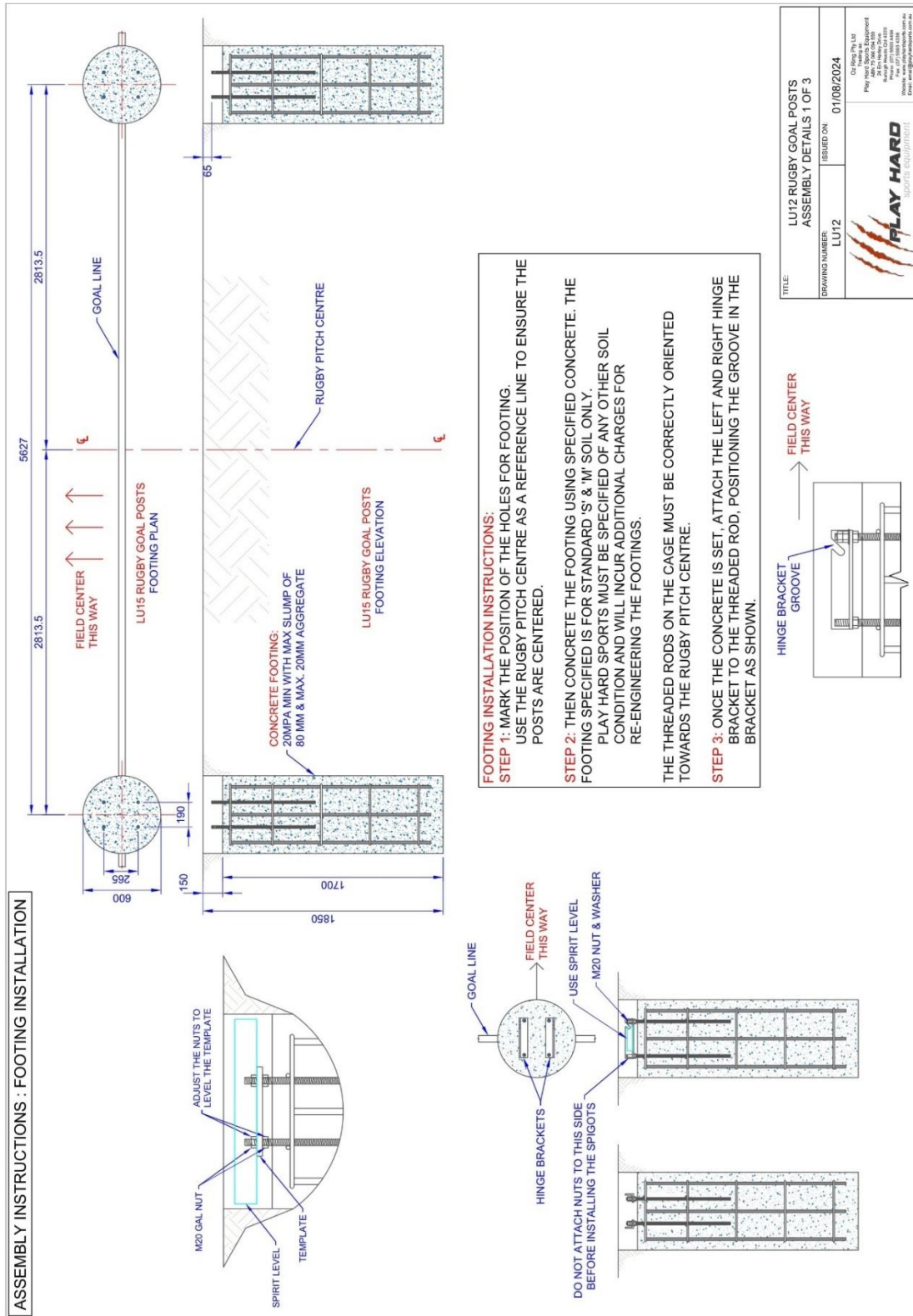


Figure 3: LU12 Footing Details

13 Alex Fisher Drive, Burleigh Heads, QLD 4220 (Australia)

Ph: 1300 851 518 | +61 7 5593 4494

Email: [email@playhardsports.com.au](mailto:email@playhardsports.com.au) | W: [www.playhardsports.com.au](http://www.playhardsports.com.au)

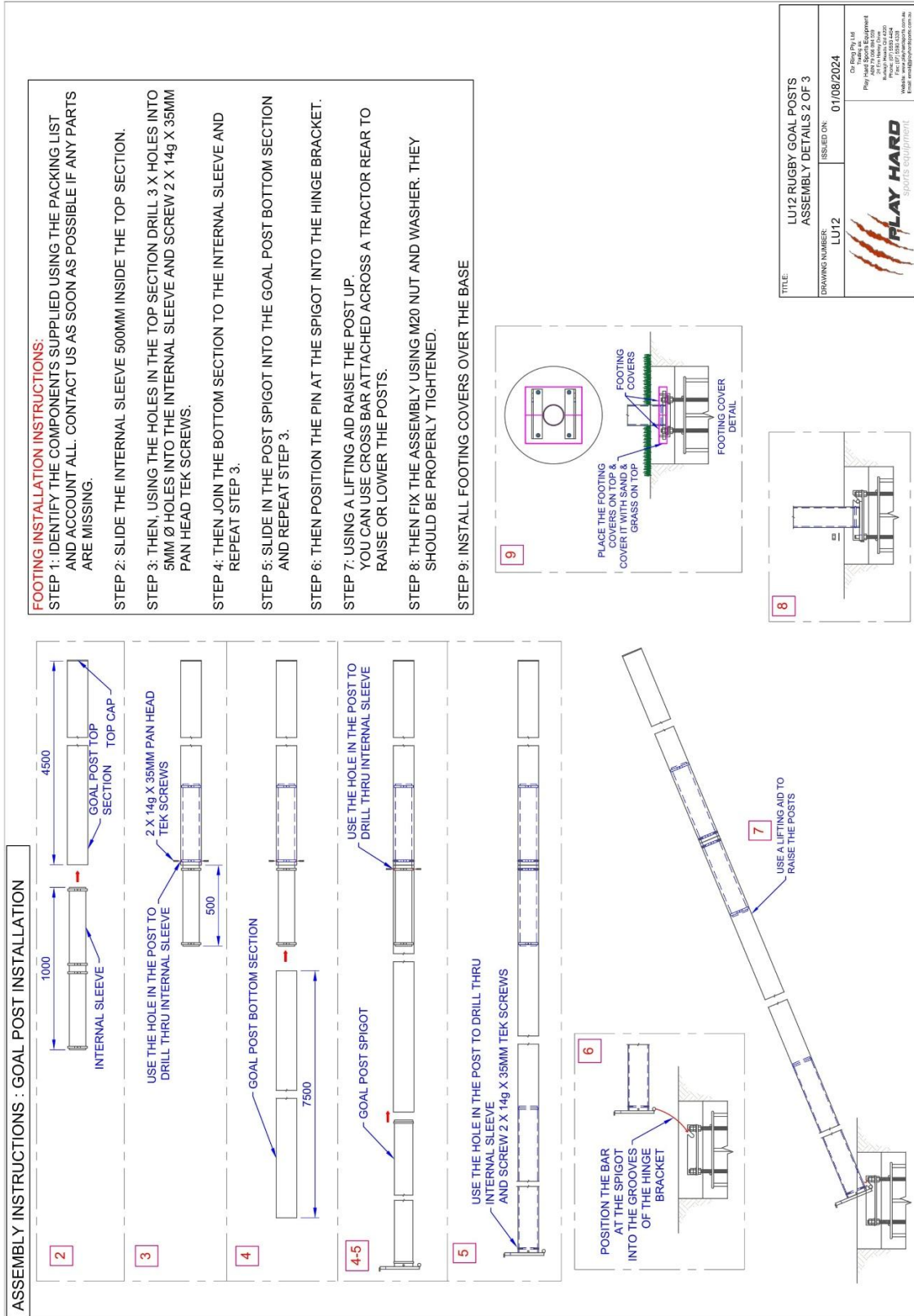


Figure 4: LU12 Assembly Instructions 2 of 3

13 Alex Fisher Drive, Burleigh Heads, QLD 4220 (Australia)

Ph: 1300 851 518 | +61 7 5593 4494

Email: [email@playhardsports.com.au](mailto:email@playhardsports.com.au) | W: [www.playhardsports.com.au](http://www.playhardsports.com.au)

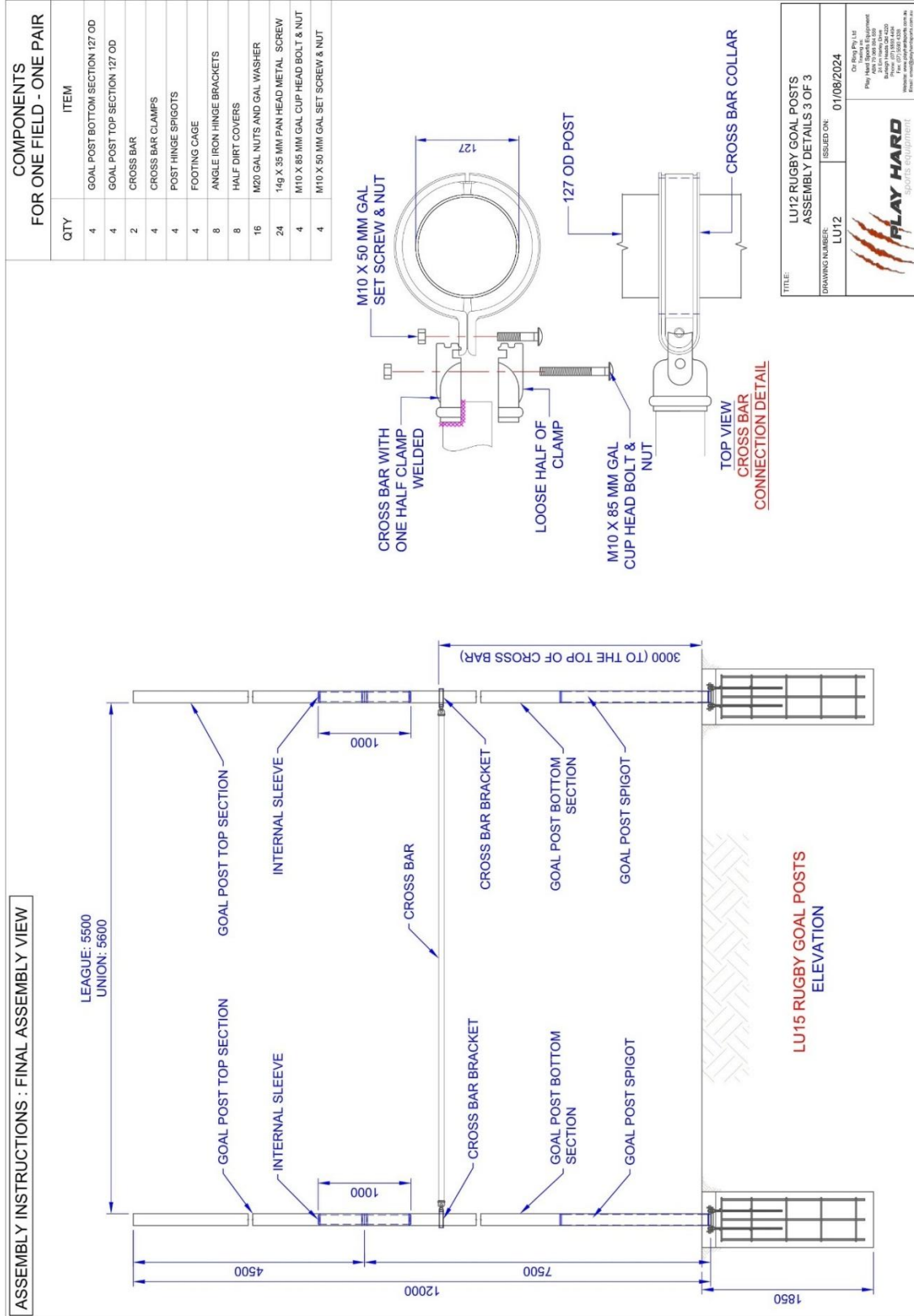


Figure 5: LU12 Assembly Instructions 3 of 3

### 3. LU16: 16 Meters High Goals

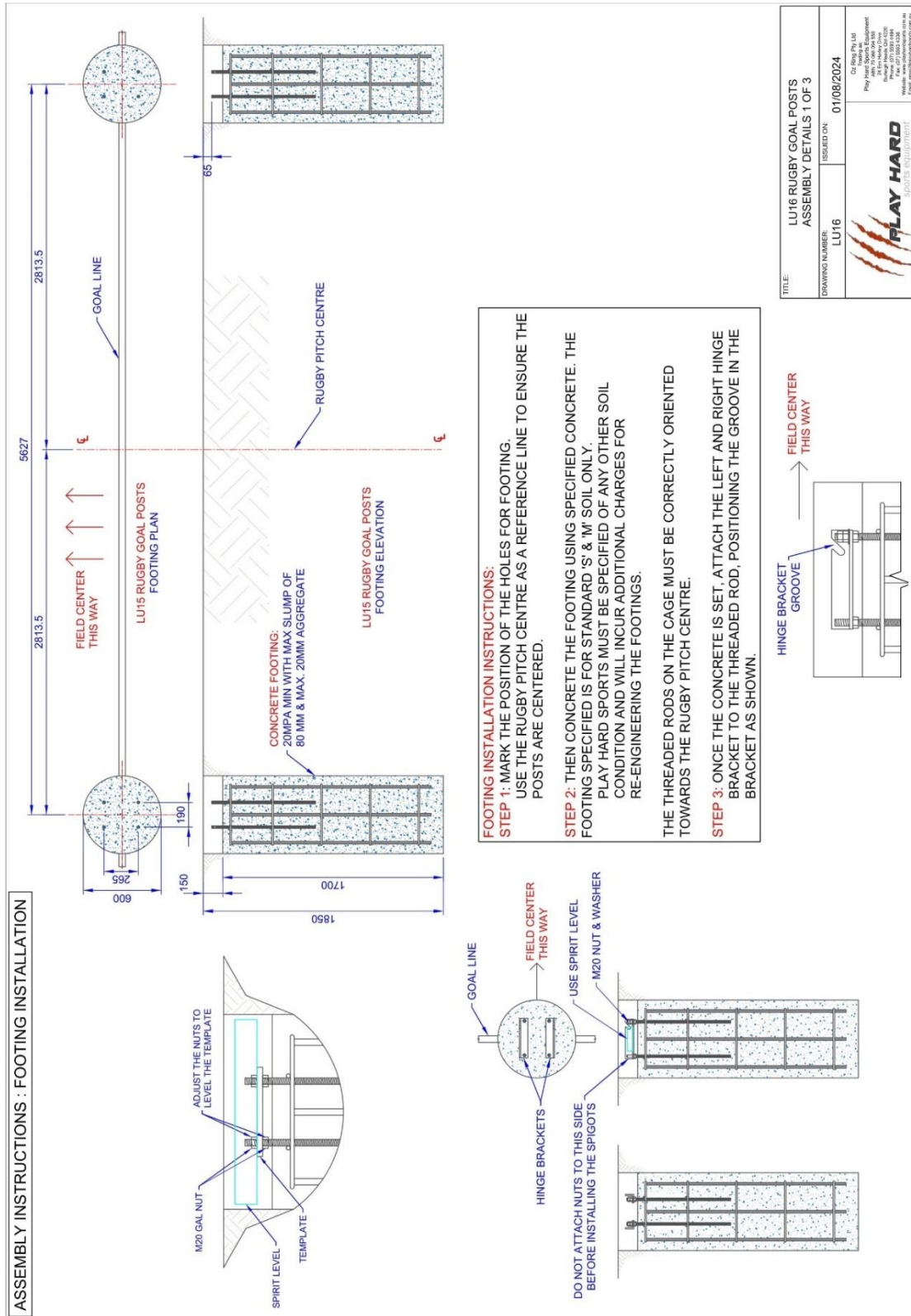


Figure 6: LU16 Footing Plan

13 Alex Fisher Drive, Burleigh Heads, QLD 4220 (Australia)

Ph: 1300 851 518 | +61 7 5593 4494

Email: [email@playhardsports.com.au](mailto:email@playhardsports.com.au) | W: [www.playhardsports.com.au](http://www.playhardsports.com.au)

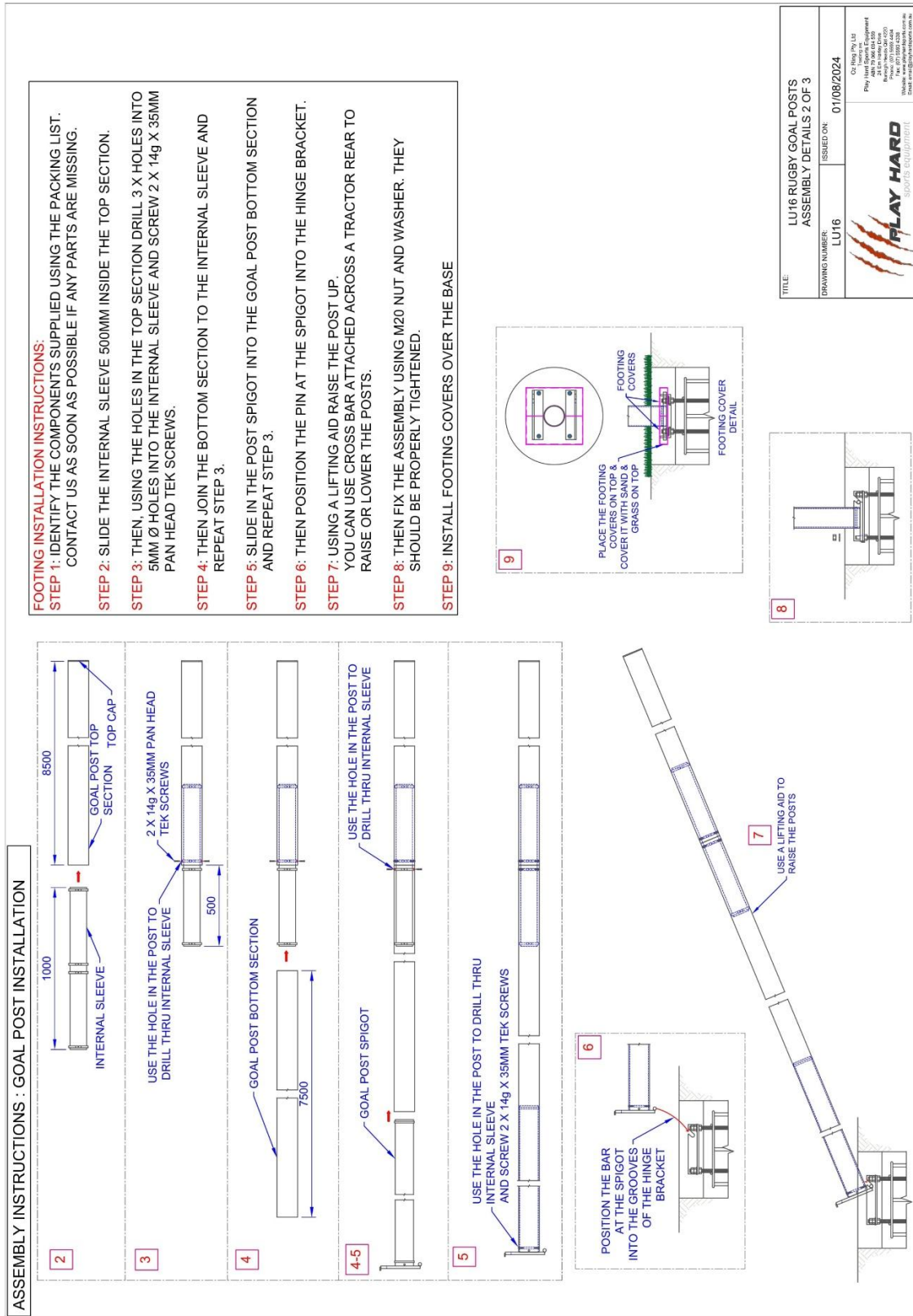


Figure 7: LU16 Assembly Instructions 2 of 3

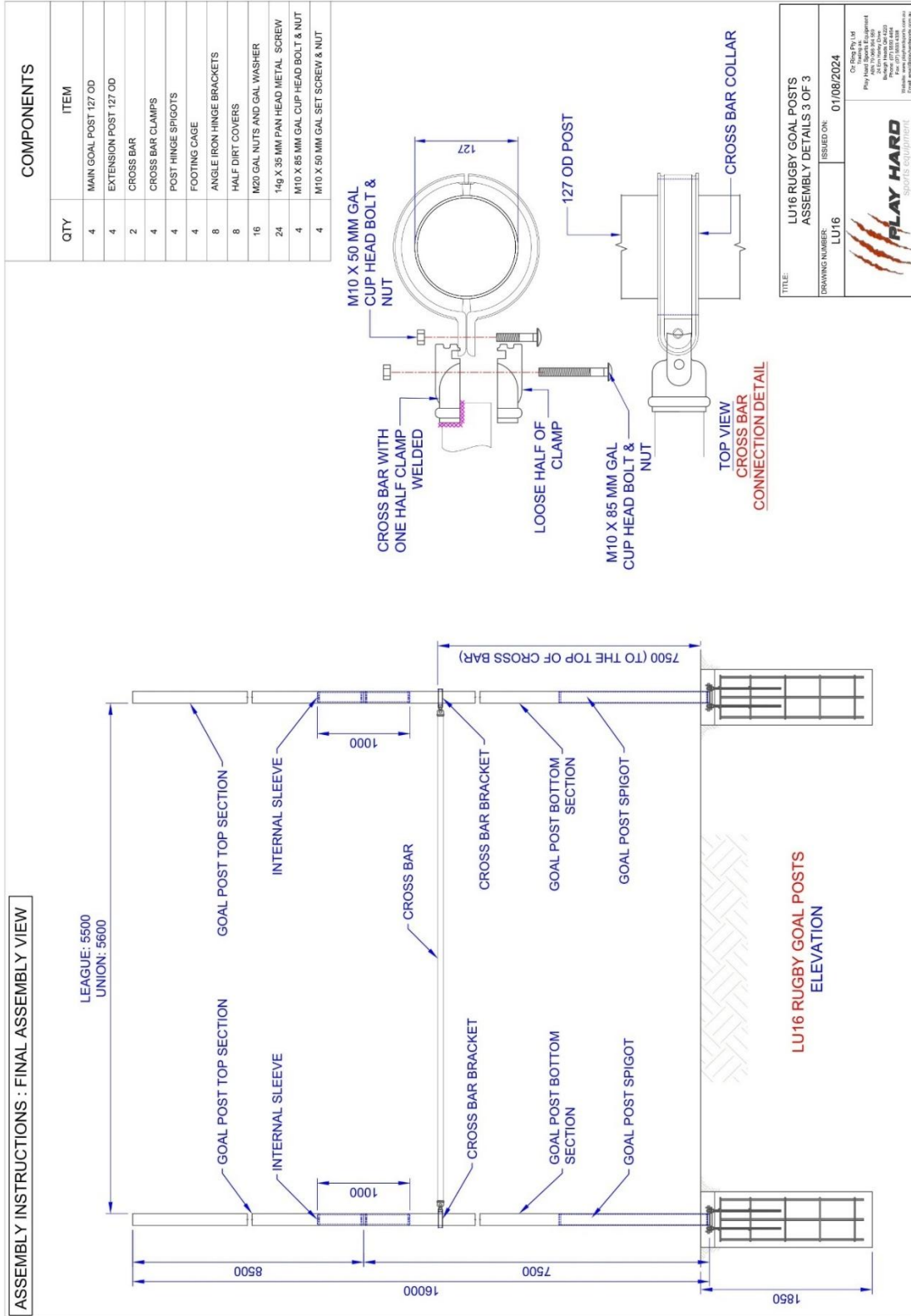


Figure 8: LU16 Assembly Instructions 3 of 3

## Maintenance:

All our Goals are designed to require a minimal level of maintenance. However, it is advisable to:

- **Regular Inspections:** Check for any signs of wear or damage. Tighten bolts and replace nets or padding as needed.
- **Cleaning:** Clean the posts with a damp cloth to remove dirt. Avoid harsh chemicals that could damage the paint. If the poles have been scratched over the intended period of use, lightly scuff the area and apply 2 coats of white gloss paint (spray painted).
- **Weather Protection:** Consider using protective covers during extreme weather to extend the lifespan of the equipment.

## Safety Guidelines (Usage)

1. **Padding:**
  - Ensure padding is securely attached to reduce injury risk.
2. **Supervision:**
  - Supervise play, especially with younger players, to ensure safety.
3. **Post Removal Post Season:**
  - Care must be taken while lowering and removing the posts during the offseason.
4. During visual inspection, if the bolts are loosened or the post or footing is damaged, the post should not be used until they have been repaired.

## Warranty Certificate:



*When you purchase a Play Hard Sports Equipment product you have the peace of mind in knowing that your product is covered by Play Hard Sports Equipment's 5-year manufacturer's warranty against faulty workmanship and materials.*

*The warranty covers damage or failure of the product during normal intended use. The warranty does not include damage to the product resulting from accident, misuse, improper installation, operation, or unauthorised repair or alteration. Products manufactured for home use are not guaranteed for use in commercial applications.*

*If the product should become defective within the warranty period, please get in touch with Play Hard Sports Equipment customer service:*

24 Ern Harley Drive  
Burleigh Heads QLD 4220

Ph: (07) 55934494

Fax: (07) 55934338

Email: [email@playhardsports.com.au](mailto:email@playhardsports.com.au)