



2/3/2025

NETBALL POSTS

Installation, Operation &
Maintenance Manual

PLAY HARD SPORTS EQUIPMENT

13 Alex Fisher Drive
Burleigh Heads, QLD 4220

Contents

Introduction	2
Product Details:	2
Certificate of Compliance:	4
Footings Details	5
1. NS60 Footing Details	5
2. NS76 Footing Details	6
Installation Instructions:	7
Maintenance:	8
Safety Guidelines	8
Warranty Certificate:	9

Introduction

This manual provides detailed information on the installation, maintenance, usage, and warranty details of NS Series Netball Posts supplied by Play Hard Sports Equipment Australia. Our netball posts are designed for durability and performance, suitable for both amateur and professional use.

Product Details:

The NS Series Netball Posts are designed and manufactured by Play Hard Sports Equipment using Structural Grade Galvanised Steel. The posts have been load-tested, engineered, and certified by Structural Engineers. All the materials used in our products have been locally sourced. Standard posts are made using 60-round and 76-round steel. We also offer 75 square posts and portable netball posts as well. Our product range includes netball posts compliant with Netball Australia Regulations as well as standard bolt-on ring netball post which offers higher load strength.

Product Specifications:

- **Models:**
Netball Australia Compliant: NS60c, NS60Tc, NS76c, NS76Tc
Bolt-On Ring: NS60, NS60T, NS76, NS76T
- **Height:**
 - **NS60c/NS76c/NS60/NS76:** Fixed at Senior height of 3.05m
 - **NS60Tc/NS76Tc/NS60T/NS76T:** Adjustable from Senior height 3.05m to Junior height 2.4m
- **Footing Option:** All our posts can either be concreted directly or installed into a ground sleeve
- **Footing Size:** 350 Diameter 900mm Deep Bored Pier with N20 Concrete
- **Material:** Galvanized steel with high gloss white paint coating
- **Diameter:** 60mm for NS60 series, 76mm for NS76 Series
- **Netball Ring:**
NR48, NR60 & NR76 Netball Australia Compliant Rings
NRA bolt-on ring with support arms for enhanced strength and durability
- **Net Tie System:** Patented Waverail system
- **Padding:**
 - NS60: NP18, NP24f, NP28, NP30,
 - NS60T: NP24, NP30s
 - NS76: NP76,
 - NS76T: NP76T, NP76s
- **Color Options:** Standard Hi-Gloss White Paint. Various paint colors are available on request

Apart from our standard product range, we offer custom netball posts based on site-specific requirements. Please contact our team for further details.

All our products' footing has been engineered to be suitable for site soil classification as Class 'A', 'S' & 'M' per AS2870. Site-specific footing and slab engineering must be done for other Soil Classes. We also offer site-specific engineering drawings if required with additional charges.

Table 1: NS60 Netball Series

Model	Post Height	Size (OD)	Ring	Netball Australia Compliant	Footing Details	Ground Sleeve Options
NS60	3.05 m	60	NRa	No	350 Dia x 900 Deep	ES60 & EHC60s
NS60c	3.05 m	60	NR60	Yes	350 Dia x 900 Deep	ES60 & EHC60s
NS60T	3.05 m & 2.4 m	60 & 48	NRa	No	350 Dia x 900 Deep	ES60 & EHC60s
NS60Tc	3.05 m & 2.4 m	60 & 48	NR48	Yes	350 Dia x 900 Deep	ES60 & EHC60s
NSP60	3.05 m	60	NRa	No	Portable	N/A
NSP60t	3.05 m & 2.4 m	60 & 48	NRa	No	Portable	N/A

Table 2: NS76 Netball Series

Model	Post Height	Size (OD)	Ring	Netball Australia Compliant	Footing Details	Ground Sleeve Options
NS76	3.05 m	76	NRa	No	350 Dia x 900 Deep	ES76 & EHC76
NS76c	3.05 m	76	NR60	Yes	350 Dia x 900 Deep	ES76 & EHC76
NS76T	3.05 m & 2.4 m	76 & 60	NRa	No	350 Dia x 900 Deep	ES76 & EHC76
NS76Tc	3.05 m & 2.4 m	76 & 60	NR48	Yes	350 Dia x 900 Deep	ES76 & EHC76



Figure 1: Netball Australia Compliant Ring (Left) & NRa Bolt-On Ring (Right)

Certificate of Compliance:

All our products have been structurally designed and are made using structural-grade steel. All the workmanship is completed following the relevant Australian Standards. Our Products comply with the following Australian Standards.

1. AS/NZS 4100:1998 Steel Structures
2. AS/NZS 1554.1:2014 Welding of steel structures
3. AS/NZS 1664 Aluminium structures
4. AS/NZS 1665:2004 Welding of aluminium structures
5. AS/NZS 2312.1:2017 Guide to the protection of structural steel against atmospheric corrosion by the use of protective coatings
6. AS/NZS 2311:2017 Guide to the paintings of buildings
7. AS/NZS 4680:2006 Hot-dip galvanized (Zinc) coatings on fabricated ferrous articles

All our products are designed and manufactured here in Australia.



Footing Details

1. NS60 Footing Details

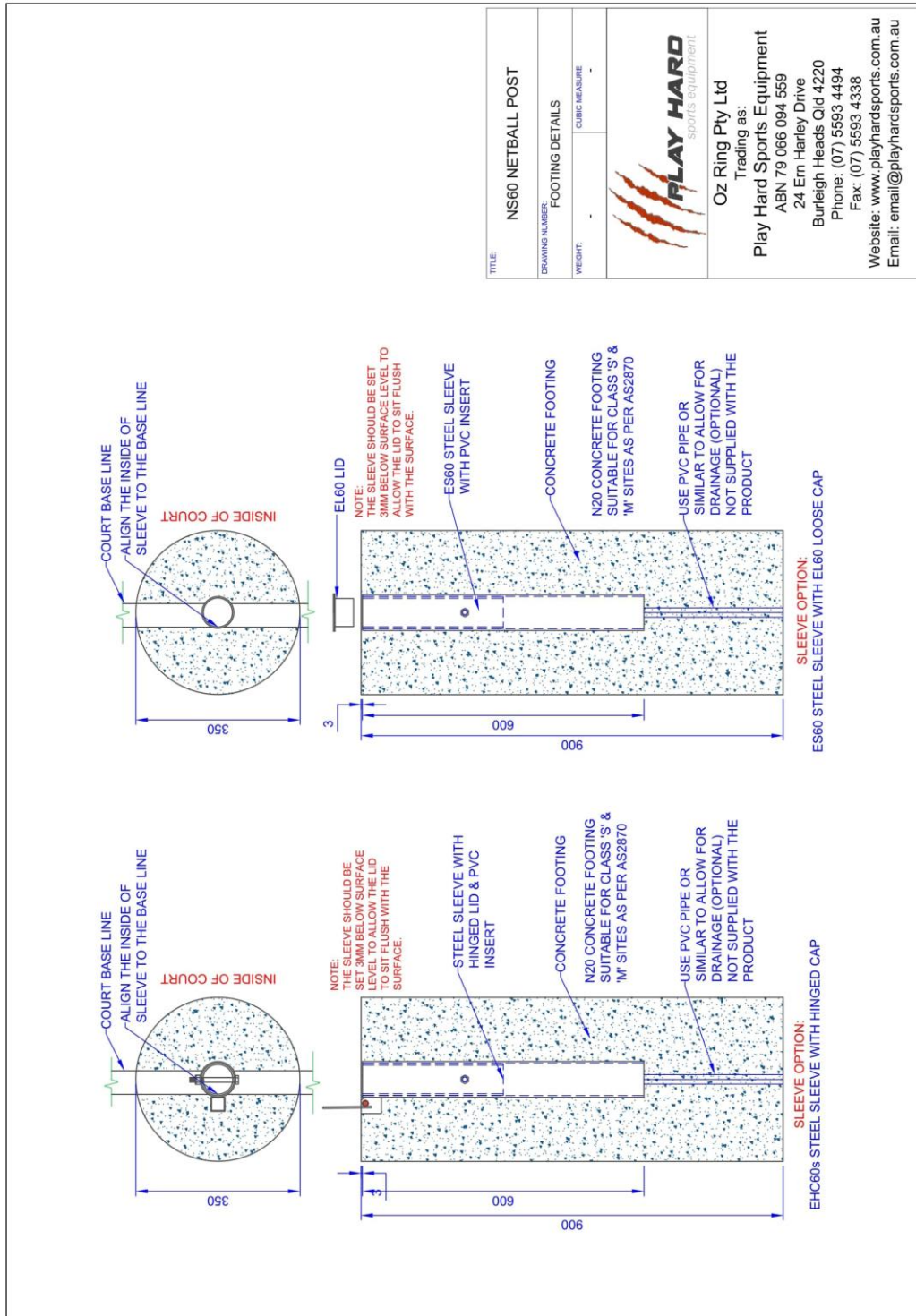


Figure 2: NS60 Series Footing Plan with Sleeve Options

2. NS76 Footing Details

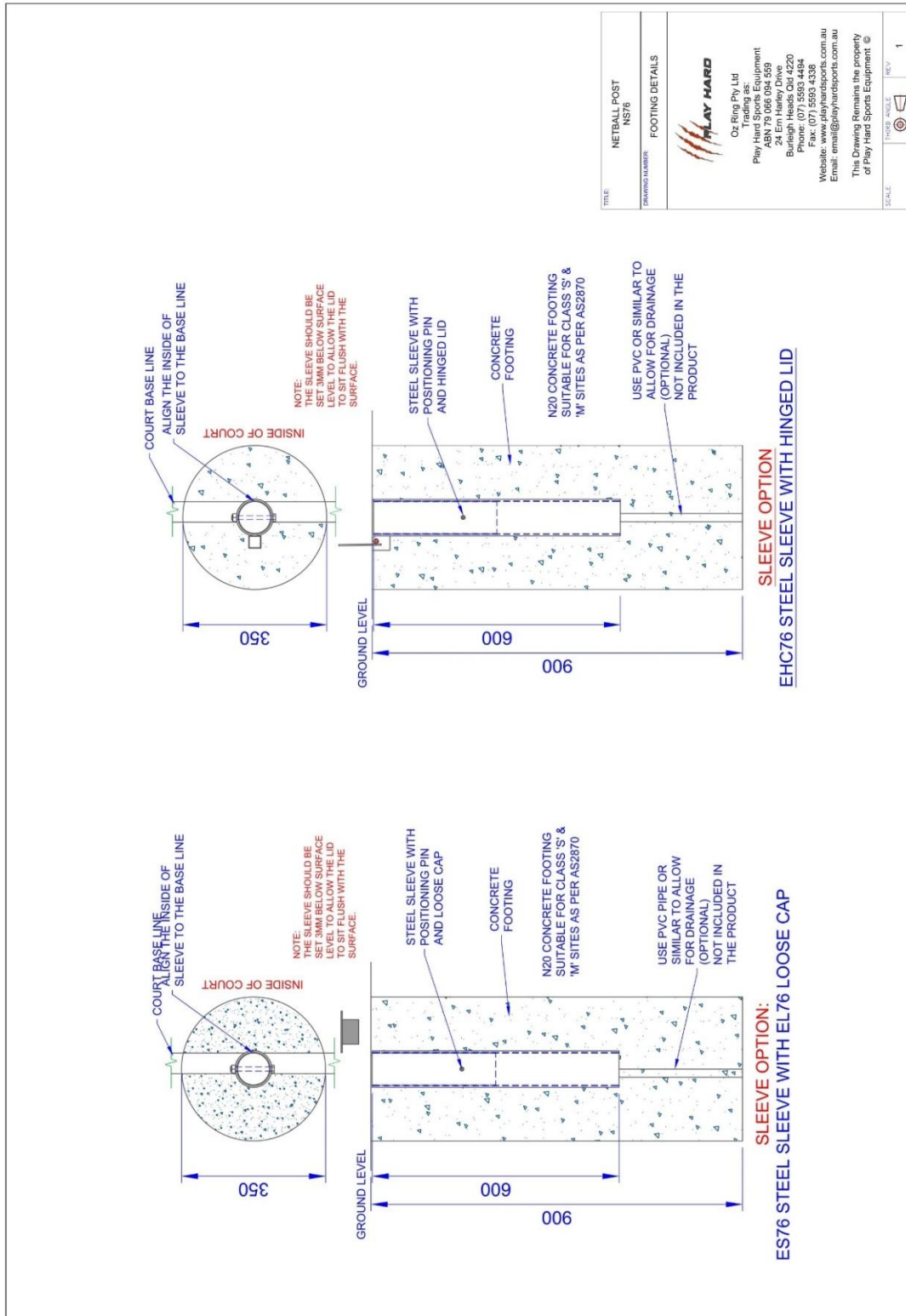


Figure 3: NS76 Series Footing Plan with Sleeve Options

13 Alex Fisher Drive, Burleigh Heads, QLD 4220 (Australia)

Ph: 1300 851 518 | +61 7 5593 4494

Email: email@playhardsports.com.au | W: www.playhardsports.com.au

Installation Instructions:

1. Site Preparation:

- Before commencing any groundwork, please survey the ground/field for any underground electrical line, water line and sewage line. Also, check for any overhead electrical lines.
- It is advised that the soil is tested to know its strength. All our Goalposts have been structurally designed to suit 'A', 'S' & 'M' Soils per AS2870. The contractors/installers must notify Play Hard Sports Equipment of any changes to the site specification. All other soil sites would require site-specific footing and slab engineering design.

2. Ground Sleeve Installation:

- Bore Drill a 350 mm Diameter and 900 mm Deep Hole.
- Insert the Ground Sleeves and use a spirit level to ensure it is straight, at level with the playing field ground level and centred to the hole.
Please refer to Figures 2 & 3 for the available ground sleeve options and their footing details. The ground sleeves must be installed in a specific orientation as shown in the Figures and it is the Installer/Contractor responsible for ensuring that.
- Pour the concrete into the hole. (*Prevent any concrete from getting inside the ground sleeve*).
- The concrete must be of a minimum 20 MPA, with a slump of 80 – 100 mm, and a maximum aggregate of size 20mm.
- Let the concrete set for at least 4 days before commencing further work.

3. Post Installation:

- Insert the netball post into the ground sleeve.
- For height-adjustable models (NS60c, NS60Tc, NS76c, NS76Tc), use the integrated lobe knob to set the desired height of either 3.05m (senior height) or 2.4m (junior height).
- Model Specific instructions are supplied with each model, please read these instructions in conjunction with the provided instructions.

4. Ring and Net Attachment:

- Attach the net to the ring using the patented Waverail net tie system. Most of our rings have net already attached to them. If needed, please refer to Figure 4 for further information.

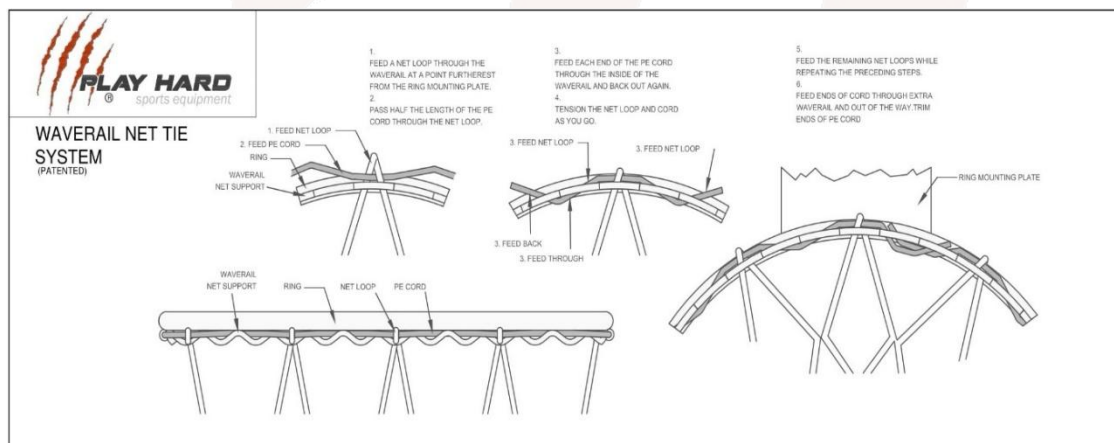


Figure 4: Waverail Net Tie System

13 Alex Fisher Drive, Burleigh Heads, QLD 4220 (Australia)

Ph: 1300 851 518 | +61 7 5593 4494

Email: email@playhardsports.com.au | W: www.playhardsports.com.au

- Then, attach the ring to the post using the supplied bolts.
- The bolts must be tightened properly.

Maintenance:

All our Goals are designed to require a minimal level of maintenance. However, it is advisable to do:

- **Regular Inspections:** Check for any signs of wear or damage. Tighten bolts and replace nets or padding as needed.
- **Cleaning:** Clean the posts with a damp cloth to remove dirt. Avoid harsh chemicals that could damage the paint. If the poles have been scratched over the intended period of use, lightly scuff the area and apply 2 coats of white gloss paint (spray painted).
- **Weather Protection:** Consider using protective covers during extreme weather to extend the lifespan of the equipment.

Safety Guidelines

1. **Padding:**
 - Ensure padding is securely attached to reduce injury risk.
2. **Supervision:**
 - Supervise play, especially with younger players, to ensure safety.
 - Prevent players from hanging from the ring or climbing up the posts to prevent serious injury.
3. **Height Adjustment:**
 - Adjust the height only when the post is not in use.
 - Care must be taken when lifting the telescopic poles to prevent injuries.
4. During visual inspection, if the bolts are loosened or the post or footing is damaged, the post should not be used until they have been repaired.

Warranty Certificate:



When you purchase a Play Hard Sports Equipment product you have the peace of mind in knowing that your product is covered by Play Hard Sports Equipment's 5-year manufacturer's warranty against faulty workmanship and materials.

The warranty covers damage or failure of the product during normal intended use. The warranty does not include damage to the product resulting from accident, misuse, improper installation, operation, or unauthorised repair or alteration. Products manufactured for home use are not guaranteed for use in commercial applications.

If the product should become defective within the warranty period, please get in touch with Play Hard Sports Equipment customer service:

24 Ern Harley Drive
Burleigh Heads QLD 4220
Ph: (07) 55934494
Fax: (07) 55934338
Email: email@playhardsports.com.au