



2/2/2025

# HOT SHOTS / PLAY MAKER BASKETBALL UNIT

Installation, Operation &  
Maintenance Manual

**PLAY HARD SPORTS EQUIPMENT**

13 Alex Fisher Drive  
Burleigh Heads, QLD 4220

## Warnings & Safety Information

Failure to follow these warnings and instructions may result in injury or property damage.

Do not attempt to assemble this equipment without following the assembly instructions. Proper and complete assembly is required to reduce the risk of personal injury or equipment damage.

The owner of this equipment is responsible to ensure all players are aware of these conditions for the safe use and operation of the equipment.

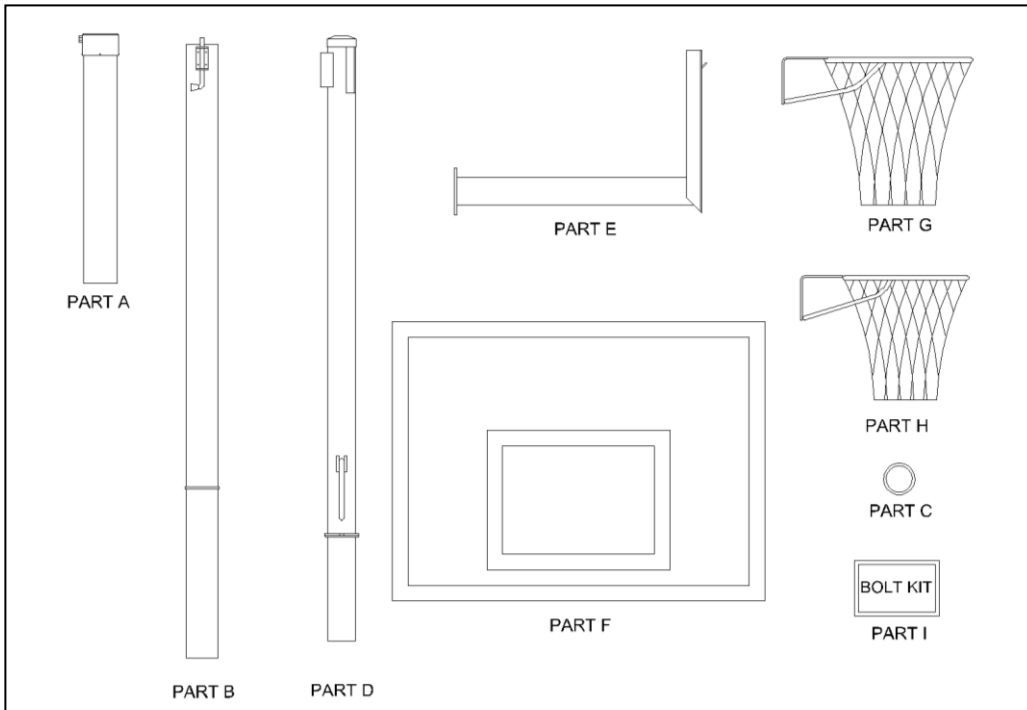
- DO NOT HANG on any part of the equipment including the net.
- During dunking activity DO NOT HANG ON THE RING.
- Do not climb on the equipment.
- When adjusting the height, keep fingers away from moving parts.
- Lubricate or grease all moving parts at least every 6 months.
- Check the equipment for signs of corrosion and if necessary spray with rust guard enamel spray paint.
- Check the equipment for loose nuts. Nuts at pivot points should be tightened to eliminate play but allow movement of the part.
- Check for equipment stability before each use.

### Part List

Part	Item Description	QTY
A	Ground Sleeve	1
B	Main Post Bottom Section	1
C	Nylon Collar	1
D	Main Post Top Section	1
E	Extension Arm	1
F	Backboard	1
G	Basketball Ring, Cord and Net	1
H	Netball Ring, Cord and Net	1
I	Bolt Kit	1

**Component Sheet, Bolt Kit Contents & Tools Required**

*Please check your order. If any parts are missing please call immediately.*



*Note: Part H and the bracket on part D are for Hot Shots only.*

**Contents of part I (bolt kit):**

Kit No.	Parts	QTY
1	M12 x 25mm Bolt	1
2	M12 x 40mm Bolt and Nut	4
	M12 Spring Washer	4
3	M10 x 75mm Bolt and Nut	4
	M10 Spring Washer	4
	M10 Flat Washer	8
4	M10 x 25mm Bolt and Nut	2
	M10 Washer	2

**Tools Required:**

Tape Measure (min. 10ft)	Post Hole Digger or Spade
Shifting Spanner (2)	Ladder (2)
Masking Tape	Straight Edge
Spirit Level	Capable Adult (2 Min.)

13 Alex Fisher Drive, Burleigh Heads, QLD 4220 (Australia)

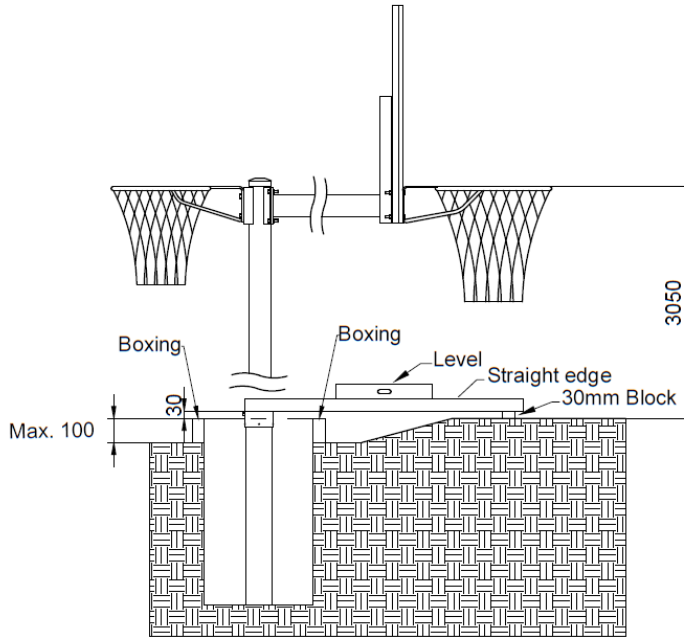
Ph: 1300 851 518 | +61 7 5593 4494

Email: [email@playhardsports.com.au](mailto:email@playhardsports.com.au) | W: [www.playhardsports.com.au](http://www.playhardsports.com.au)

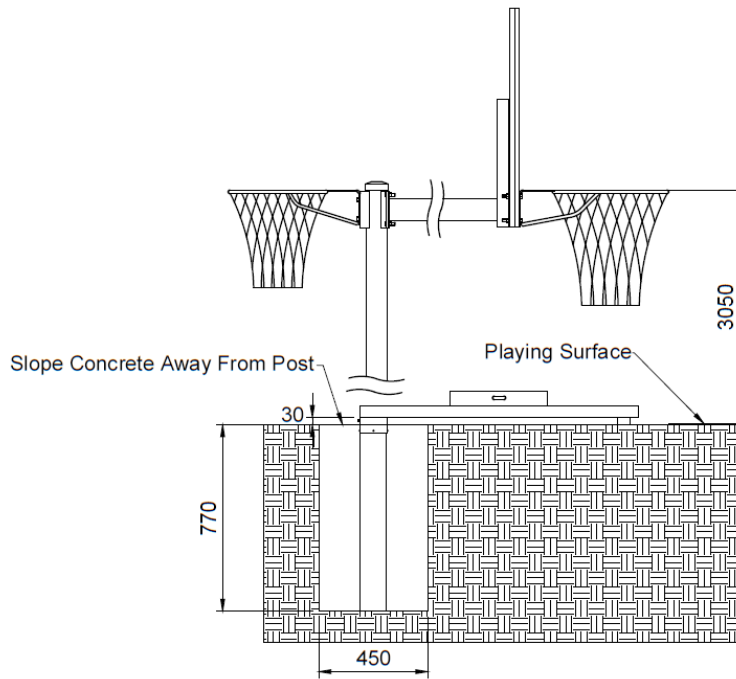
## Installation Steps

*Note: If unsure about any steps or processes in this manual please contact a relevant professional for advice or assistance.*

1. Select the site for the post hole to be located. Ensure there is at least a 1550mm clear radius about the centre of the pole location and no overhead power cables, trees or obstructions.
2. Check the hole location for any services and utilities both underground and overhead.
3. If the ground level at the hole position is lower than the height under the ring, box up around hole to achieve a concrete depth of 770mm.
4. Dig a hole 770mm deep and 450mm in diameter (inclusive of boxing up height if applicable) as shown in Detail A.
5. Place tape or similar over the bottom of the ground sleeve to prevent concrete from entering.
6. Insert the ground sleeve into the centre of the hole with the fastening bolt facing away from where the hoop is to be located.
7. Level the ground sleeve to be 30mm above playing surface and vertical in both axes using a spirit level.
8. Fix the sleeve into position so it does not move when pouring concrete.
9. Mix 0.116m<sup>3</sup> of 20Mpa concrete as per manufacturer's instructions. *Note: Do not use post hole mix.*
10. Fill the hole with concrete making sure you don't move the ground sleeve.
11. Trowel the concrete sloping away from pole to prevent water pooling around pole base.
12. While concrete mix is still fresh ensure that ground sleeve is still level in all necessary directions and axes.
13. Leave at least 4 days for the concrete to cure.

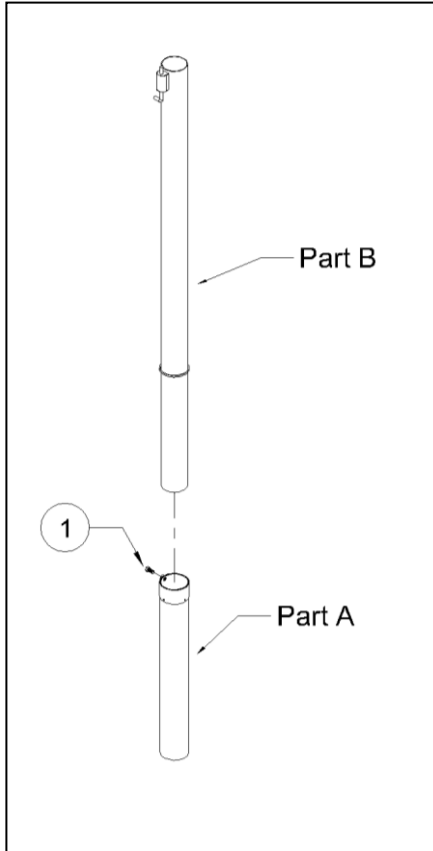


Detail A: Ground lower than playing surface.



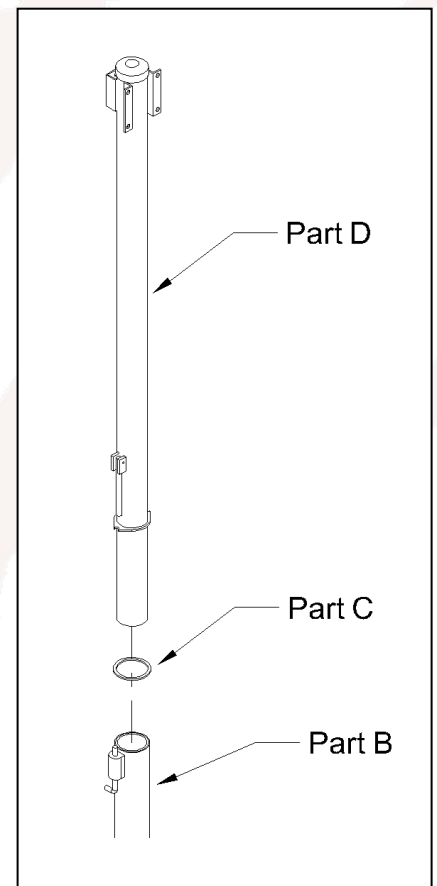
Detail B: Ground level with playing surface.

*Note: Do not over tighten Nyloc Nuts. They should be tightened to reduce play but still allow the pivoting parts to move without tension.*

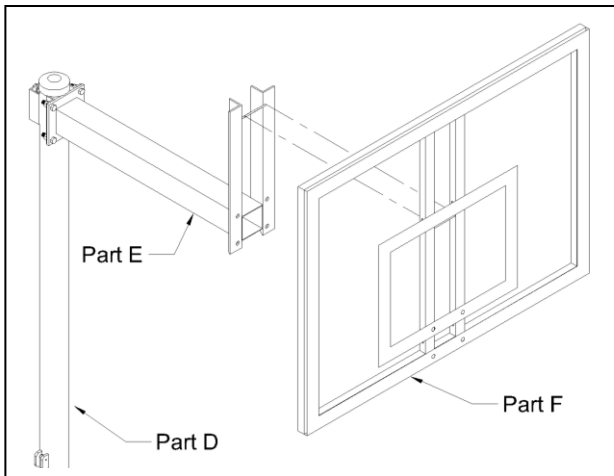
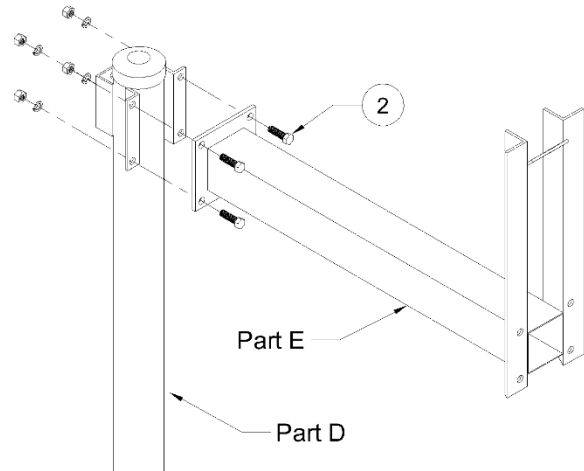


1. Place part B into Part A with the rotation latch facing the side and tighten the bolt from kit No. 1 to prevent pole movement.

2. Slide part C onto the base of part D, then place part D into part B. Make sure part C does not fall off in this process. Lock into position using latch on part B.



1. Bolt part E onto part D using bolt kit No.2.

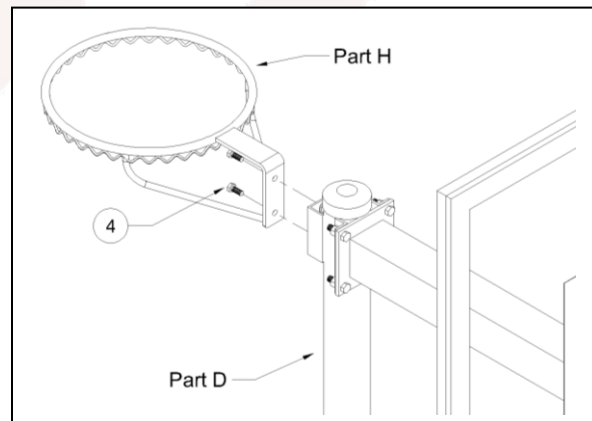


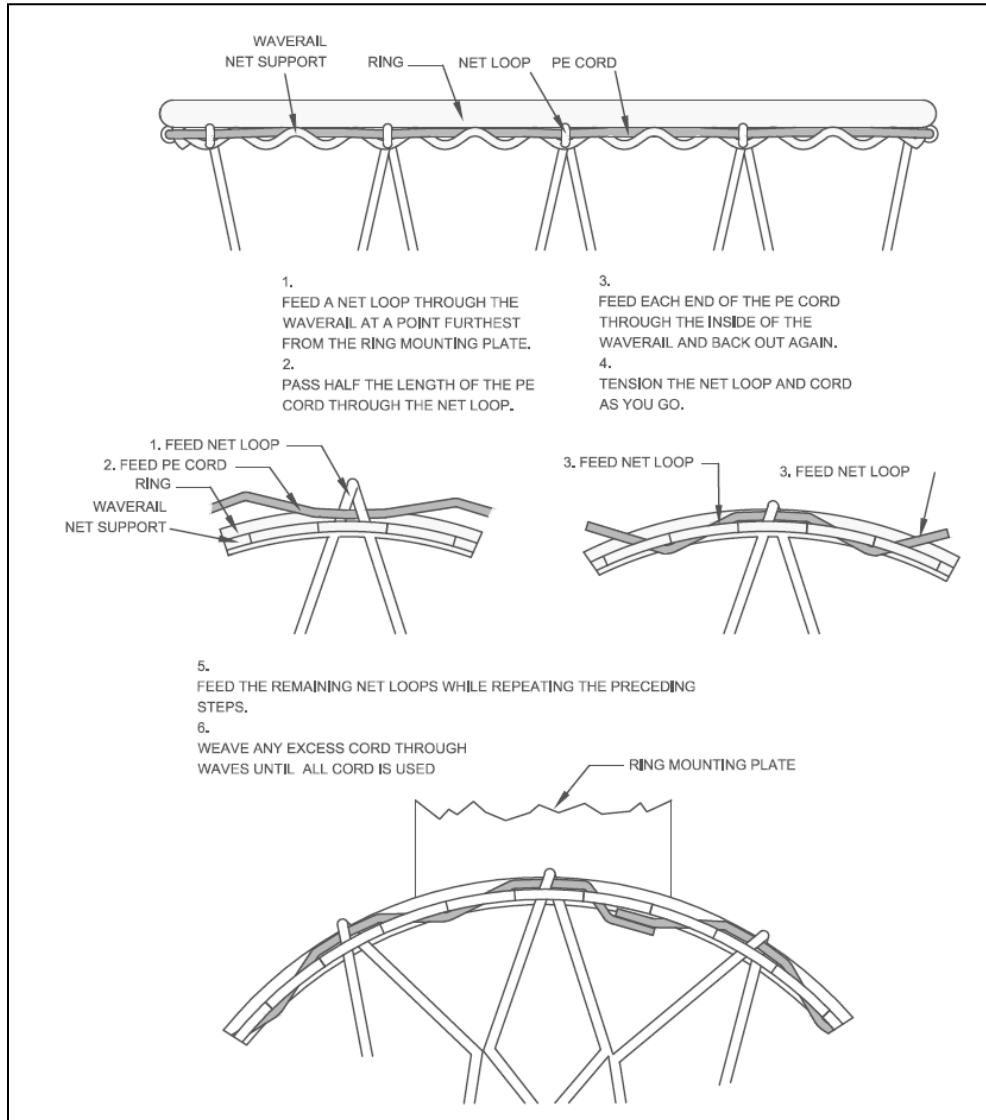
2. Sit part F onto the angled protruding bar on part E. Hold firmly in position until bolted in the next step.

3. Use the No. 3 kit bolts and washer and push them through the holes in part G. Then push the bolts through part F and fix the top bolts first followed by the bottom bolts.

4. Attach part H to the back bracket on part D using bolt kit No. 4 (Hot Shots only).
5. Put net onto ring as per instructions below:

*Note: Ensure that the net is the correct way up.*







## Warranty Certificate:



*When you purchase a Play Hard Sports Equipment product you have the peace of mind in knowing that your product is covered by Play Hard Sports Equipment's manufacturer's warranty against faulty workmanship and materials.*

*The HOT SHOTS & PLAY MAKER Basketball Towers Structure has 10 years of warranty. The Backboard has a 10-year warranty, The ProRim has a 25-year warranty, OzRing has a 10-year warranty and there is a 2-year warranty for the padding and a year for the nets.*

*The warranty covers damage or failure of the product during normal intended use. The warranty does not include damage to the product resulting from accident, misuse, improper installation, operation, or unauthorised repair or alteration. Products manufactured for home use are not guaranteed for use in commercial applications. If the product should become defective within the warranty period, please get in touch with Play Hard Sports Equipment customer service:*

24 Ern Harley Drive

Burleigh Heads QLD 4220

Ph: (07) 55934494

Fax: (07) 55934338

Email: [email@playhardsports.com.au](mailto:email@playhardsports.com.au)