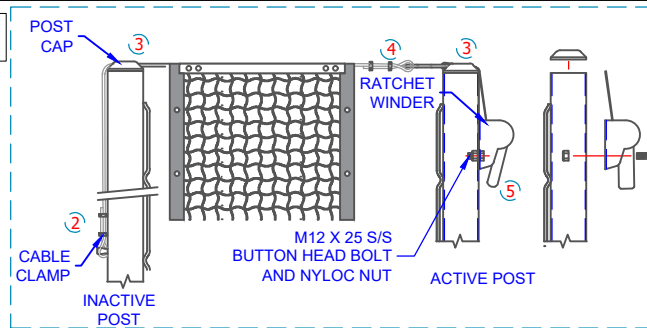


ASSEMBLY INSTRUCTIONS

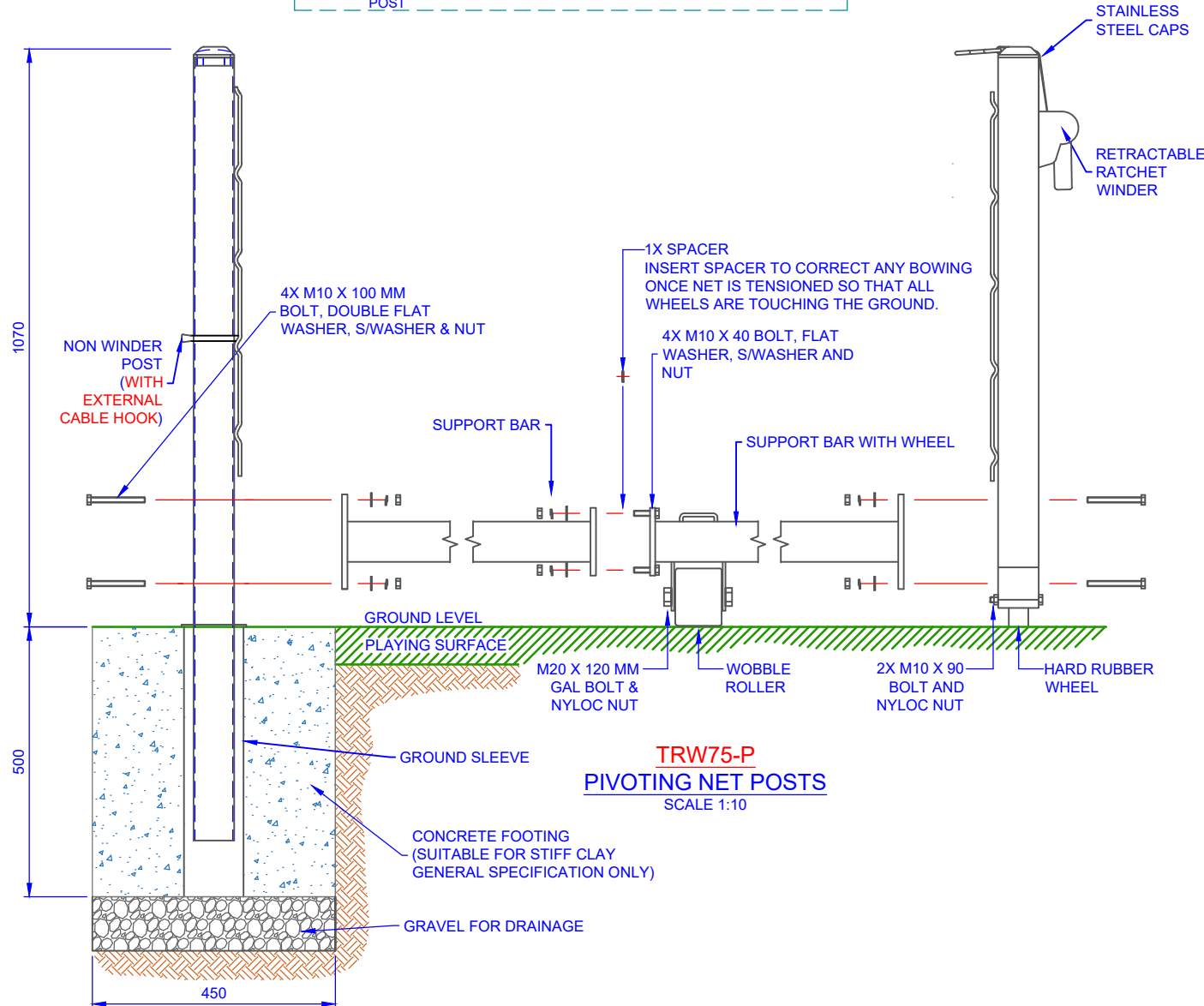


INSTRUCTION TO ATTACH NET

1. INSERT THE POST INTO THE GROUND SLEEVE. ENSURE THE WAVERAILS ON EACH POST ARE FACING EACH OTHER. **THE NET ROPE HAS EYE AT BOTH ENDS.**
2. HOOK ONE END OF THE NET ROPE WITH EYE TO THE HOOK IN THE INACTIVE POST.
3. PASS THE ROPE OVER THE GROOVE IN THE INACTIVE POST CAP AND FEED THE OTHER END OF THE ROPE THROUGH THE GROOVE IN THE ACTIVE POST AS SHOWN.
4. THEN, HOOK THE OTHER END OF THE ROPE WITH EYE TO THE STRAP OF THE RATCHET WINDER.
5. USE THE RATCHET WINDER'S HANDLE TO TIGHTEN THE NET.

COMPONENTS

QTY	ITEM
1	NON WINDER POST
1	SUPPORT BAR
1	SUPPORT BAR WITH WHEEL BRACKET
1	WINDER POST
1	SPACER
1	WOBBLE ROLLER
1	ONE SET ON TRW75 POST FITTINGS 1 X RATCHET WINDER (PROGRIP - RETRACTABLE RATCHET - TIE DOWN STRAP - BOLT ON) 2 X POST CAPS 1 X M10 X 25 MM S/S SOCKET HEAD BOLT & NYLOC NUT
8	M10 X 100 MM S/S HEX BOLT, S/WASHER & NUT
4	M10 X 40 MM S/S HEX BOLT, S/WASHER & NUT
20	M10 S/S FLAT WASHER
1	M20 X 120 MM GAL HEX BOLT & NYLOC NUT
2	M10 X 90 MM GAL HEX BOLT & NYLOC NUT
2	100 MM HARD RUBBER WHEEL WITH 12.7 MM BORE DIAMETER & 11MM BEARING SLEEVE (WS4-OBR FROM FORMULA WHEELS)



TITLE: TRW75-P PIVOTING RATCHET WINDER TENNIS POSTS ASSEMBLY INSTRUCTIONS

DRAWING NUMBER: TRW75-P PIVOTING TENNIS POSTS



Oz Ring Pty Ltd
 Trading as:
Play Hard Sports Equipment
 ABN 79 066 094 559
 24 Ern Harley Drive
 Burleigh Heads Qld 4220
 Phone: (07) 5593 4494
 Fax: (07) 5593 4338
 Website: www.playhardsports.com.au
 Email: email@playhardsports.com.au