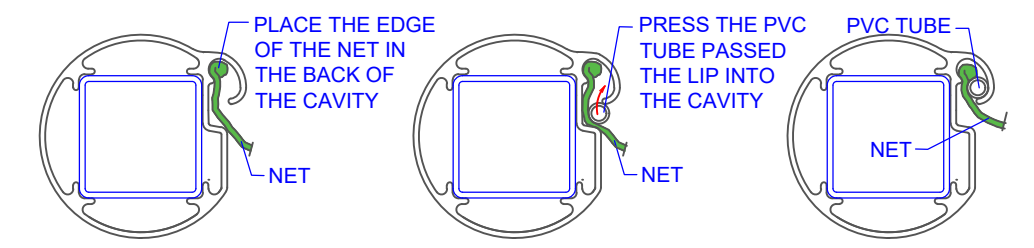
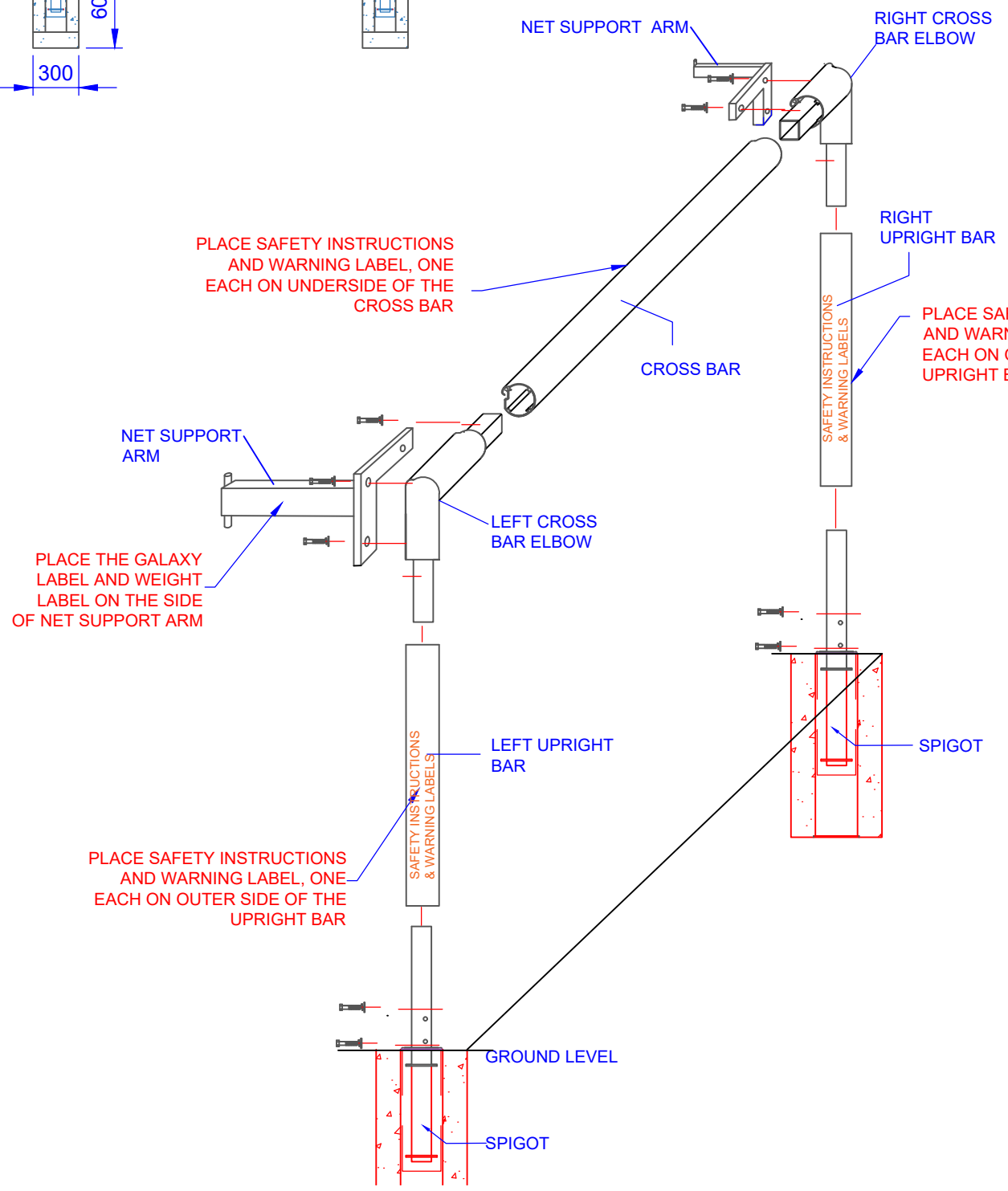
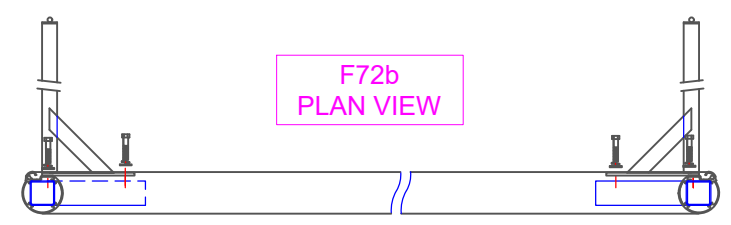
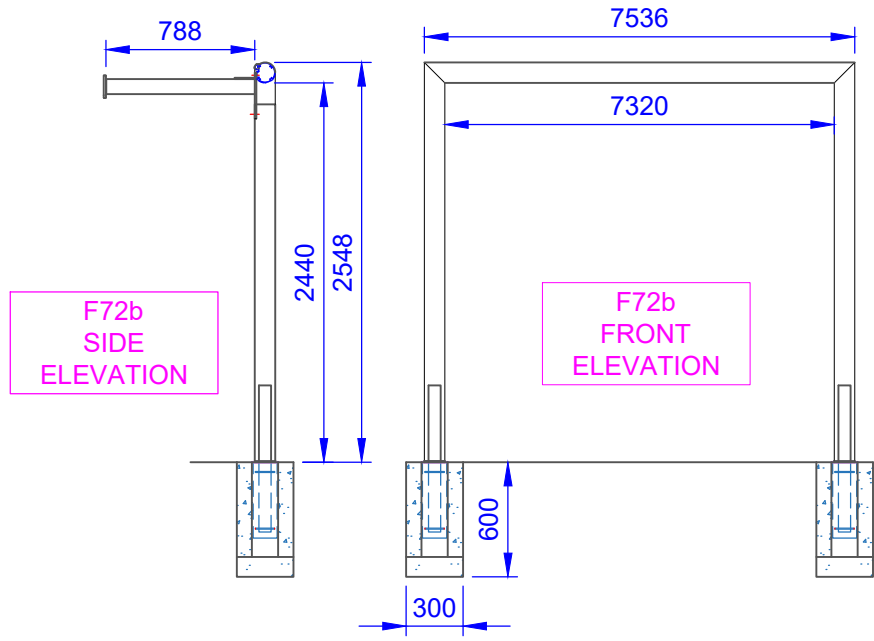


## COMPONENTS

ONE PAIR of GOALS

QTY	ITEM
2	CROSS BAR
2	LEFT UPRIGHT WITH SPIGOT
2	RIGHT UPRIGHT WITH SPIGOT
2	CROSS BAR ELBOW - LEFT
2	CROSS BAR ELBOW - RIGHT
2	NET SUPPORT BAR - LEFT
2	NET SUPPORT BAR - RIGHT
2	8 MM PVC TUBE 3100 MM LONG
4	8 MM PVC TUBE 2050 MM LONG
24	M10 X 50 MM S/S HEX HEAD BOLT, WASHER & S/WASHER
2	NET 7.4 X 2.5 X 1.0 X 2.0 M
4	GROUND SLEEVE AND CAP
1	Each Packing, Assembly & Installation sheet



## ASSEMBLY INSTRUCTIONS

1. Lay the crossbar and two elbows on the ground, with the cavity facing upwards.
2. Insert the elbows into either side of cross bar and secure them with M10 x 50 mm button head bolts, washers and spring washers.
3. Lay the uprights with spigot in line with the elbows with cavity facing upwards and secure them with M10 x 50 mm button head bolts, washers and spring washers.
4. Place the net support bar over the holes in the elbows and insert the M10 x 50mm button head bolts, washers and spring washers.
5. Attach the net to the cross bar and uprights while they are lying on the ground by inserting the net edge into the profile then pressing the PVC tube under the track curve.
6. Stand the goal upright and place it into the ground sleeves.
7. Tie the net cord to the net rail pins to reduce sag in the net.

TITLE: GALAXY 72b  
 SOCCER GOALS (WITHOUT GROUND BARS)

DRAWING NUMBER:  
 ASSEMBLY INSTRUCTIONS



Oz Ring Pty Ltd  
 Trading as:  
 Play Hard Sports Equipment  
 ABN 79 066 094 559  
 24 Ern Harley Drive  
 Burleigh Heads Qld 4220  
 Phone: (07) 5593 4494  
 Fax: (07) 5593 4338  
 Website: [www.playhardsports.com.au](http://www.playhardsports.com.au)  
 Email: [email@playhardsports.com.au](mailto:email@playhardsports.com.au)

This Drawing Remains the property of Play Hard Sports Equipment ©