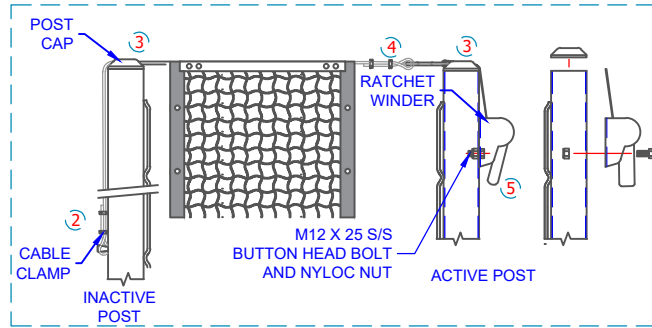
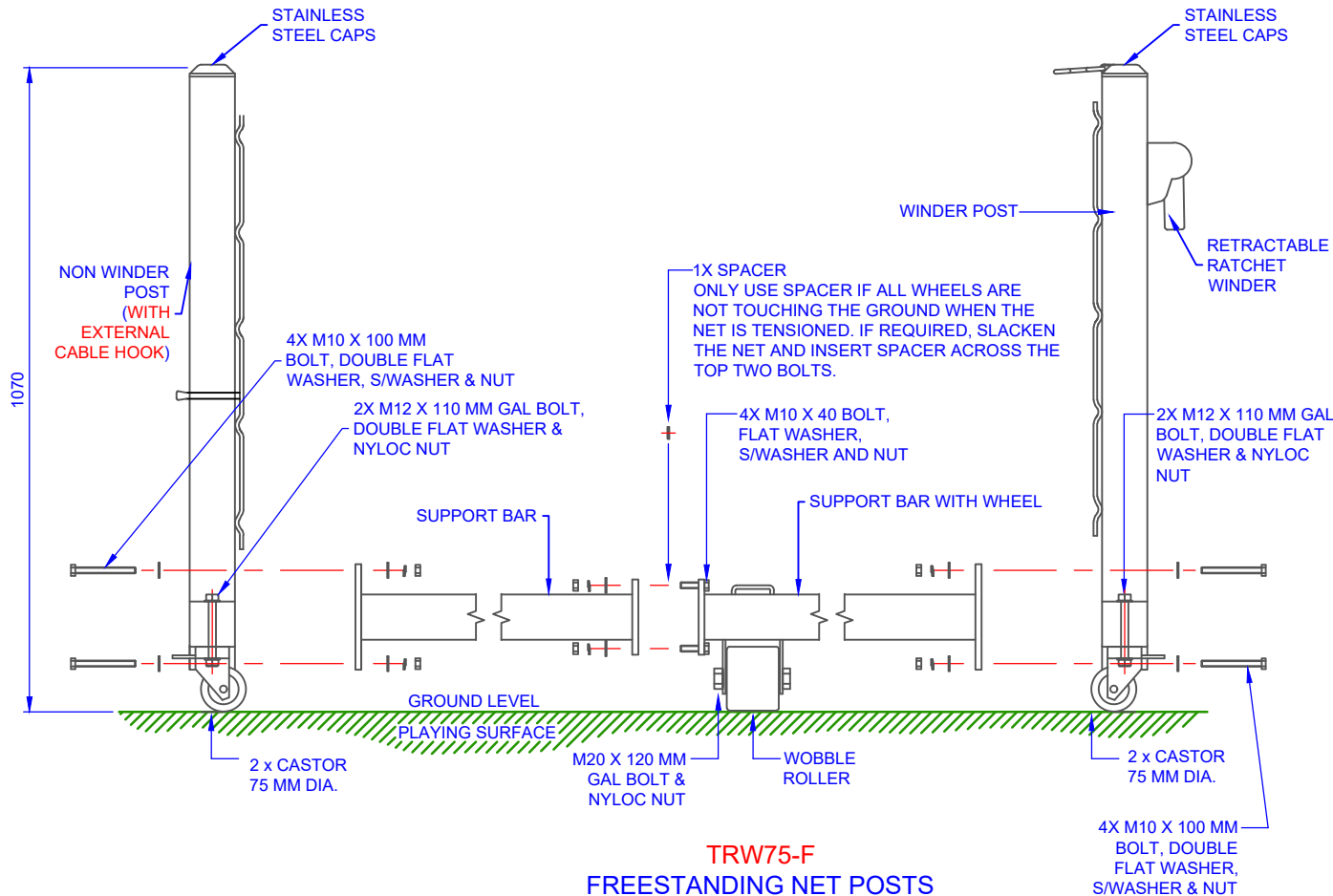


# ASSEMBLY INSTRUCTIONS



## INSTRUCTION TO ATTACH NET

1. INSERT THE POST INTO THE GROUND SLEEVE. ENSURE THE WAVERAILS ON EACH POST ARE FACING EACH OTHER. **THE NET ROPE HAS EYE AT BOTH ENDS.**
2. HOOK ONE END OF THE NET ROPE WITH EYE TO THE HOOK IN THE INACTIVE POST.
3. PASS THE ROPE OVER THE GROOVE IN THE INACTIVE POST CAP AND FEED THE OTHER END OF THE ROPE THROUGH THE GROOVE IN THE ACTIVE POST AS SHOWN.
4. THEN, HOOK THE OTHER END OF THE ROPE WITH EYE TO THE STRAP OF THE RATCHET WINDER.
5. USE THE RATCHET WINDER'S HANDLE TO TIGHTEN THE NET.



**TRW75-F**  
**FREESTANDING NET POSTS**  
SCALE 1:10

# COMPONENTS

QTY	ITEM
1	NON WINDER POST
1	SUPPORT BAR
1	SUPPORT BAR WITH WHEEL BRACKET
1	WINDER POST
1	SPACER
1	WOBBLE ROLLER
1	SET OF TRW75 POST FITTINGS
8	M10 X 100 MM S/S HEX BOLT, S/WASHER & NUT
4	M10 X 40 MM S/S HEX BOLT, S/WASHER & NUT
20	M10 S/S FLAT WASHER
1	M20 X 120 MM GAL HEX BOLT & NYLOC NUT
4	M12 X 110 MM GAL HEX BOLT & NYLOC NUT
8	M12 GAL FLAT WASHER
4	75MM REB RUBBER SWIVEL SINGLE BOLT CASTOR WITH BRAKE (S3355B-RICHMOND WHEELS)
4	75MM INST RUBBER SWIVEL SINGLE BOLT CASTOR (S3355-RICHMOND WHEELS)

TITLE: TRW75-F FREE STANDING RATCHET WINDER TENNIS POSTS ASSEMBLY INSTRUCTIONS

DRAWING NUMBER: TRW75-F FREE STANDING TENNIS POSTS



Oz Ring Pty Ltd  
Trading as:  
**Play Hard Sports Equipment**  
ABN 79 066 094 559  
24 Ern Harley Drive  
Burleigh Heads Qld 4220  
Phone: (07) 5593 4494  
Fax: (07) 5593 4338  
Website: [www.playhardsports.com.au](http://www.playhardsports.com.au)  
Email: [email@playhardsports.com.au](mailto:email@playhardsports.com.au)