



PHS
Play Hard Sports

Designers & Manufacturers of Quality Sports Equipment



AUSTRALIAN MADE

PICKLEBALL



INNOVATIVE SPORTS EQUIPMENT FOR THE WORLD

Wide range of Pickleball options

Choice of Internal Winder or Quick Release Ratchet Mechanism

- ✓ In Ground Posts
- ✓ Base Plates
- ✓ Freestanding Posts
- ✓ Pivoting Post

Supplied with:

- ✓ Nets (Freestanding & Pivoting)
- ✓ Centre Straps & Anchors
- ✓ Ground Sleeves (In Ground Posts)



Photo: Our PBI Posts featured at the Gold Coast Pickleball Community Centre



Photo: Our PBI-BP Posts featured at Yeppoon Tennis Club

HOW PLAY HARD SPORTS CAN HELP YOU

Play Hard Sports has been designing & manufacturing Sports Equipment since 1993 and are proudly Australian owned and operated. All our Equipment is manufactured in Australia, and we pride ourselves on the quality of our long-lasting equipment and truly unique designs.

Did you know?

You can fit 4 Pickleball Courts on a Standard Tennis Court!

PICKLEBALL PRODUCTS

Dimensions:

Post spacing is 6.71m apart (Inside Post to Inside Post); Net spacing at 6.65m x 760mm drop; Height of posts is 1m with the net height at 915mm.

Pickleball is currently one of the fastest growing sports in Australia, as well as the United States, where many Tennis Clubs are tendering to Pickleball Players. Here at PHS we have a diverse range of Pickleball Equipment to suit your needs! Whether you're a Tennis Club looking at expanding into Pickleball or have a court at home, we have various Pickleball options to fit your requirements:

Court Dimensions



Our posts are made from (8000 ULTRAGAL C350) and are 75mm square and 1m in height. These Net Posts deliver superior scratch resistance and comprise of:

- Zinc (Zn),
- Aluminium (Al)
- Magnesium (Mg)

This provides maximum durability 2.5 times harder than galvanised steel for maximum efficiency, and ultimate versatility. Excellent for near marine environments.

PBI (Internal Winder)

The stainless-steel fittings are a stand-out feature. The bronze and stainless-steel gears are longer wearing than brass.

The active end winding post has an internal stainless steel and bronze machined finish internal winder mechanism to tension the net cable for performance and precise winding action.

The non-winding post has an internal hook for the net cable and a stainless-steel cap.

- ✓ Posts are coated Black using 2 pack urethane paint
- ✓ Other colours available
- ✓ Includes PVC Ground Sleeves & Sleeve Collars

PBR (Quick Release Ratchet)

These posts are generally used on courts where the posts and net need to be removed frequently where they have been designed for ease of use.

Posts are supplied with Quick Release Ratchet and sleeve cover plates which set the height of the posts in the sleeve.

There are no dangerous parts protruding from the post when the net is left unattached.

- ✓ Posts are coated Black using 2 pack urethane paint
- ✓ Includes PVC Ground Sleeves & Sleeve Cover Plates





PBI-BP / PBR-BP (Posts on Base Plates)

Our Pickleball Posts comprise of the same features as above, however the posts are instead mounted onto Base Plates, which are then fixed to the Court at surface level. This removes the necessity for Ground Sleeves as they will fix onto the courts surface.

- ✓ Posts are coated Black using 2 pack urethane paint
- ✓ Additional Option: Net to suit



PBI-F / PBR-F (Freestanding Posts on Wheels)

Our Freestanding Posts are mounted onto a fixed support bar that feature wheels on each end for easy movability and zero groundwork. These posts are great for multipurpose courts where the net may need to be moved to allow for other sports to be played on the court.

- ✓ Posts are coated Black using 2 pack urethane paint
- ✓ Net Included
- ✓ No groundwork required



PBI-P / PBR-P (Pivoting Post)

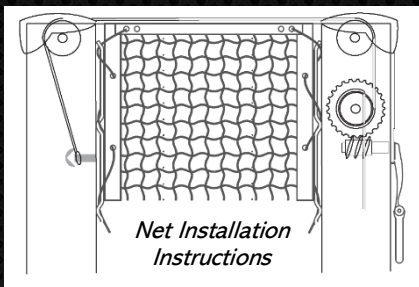
Our Pivoting Pickleball Posts are a great addition for multipurpose courts and areas that are used for several sports, as our system comprises of one post that pivots in our standard Ground Sleeve, while the other post is designed on wheels. The bottom support bar features a wheel in the middle to assist in additional support and movement.

This provides easy movability and convenience as the net can be wheeled out of the way in a matter of seconds and re-aligned for Pickleball just as quick.

- ✓ Posts are coated Black using 2 pack urethane paint
- ✓ Supplied in Kit Form with: Posts, Net and Ground Sleeve

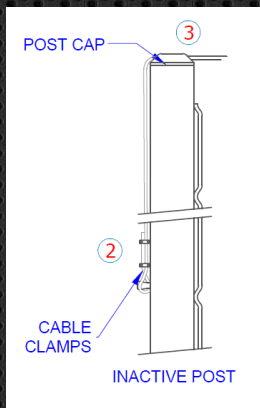


Installation & Specifications



1. Feed the swaged end of the cable through the non-winder post, and onto the Internal post hook.
2. Feed the non-swaged cable end through the Winder post cap and into the hole in the drum gear (no need to cut excess cable off)
3. Tension the cable by hand pulling so there is minimum cable to wind around the drum.
4. Turn the handle to take up the cable tension. The drum will only need a few revolutions to tension the cable.

Net Installation Instructions



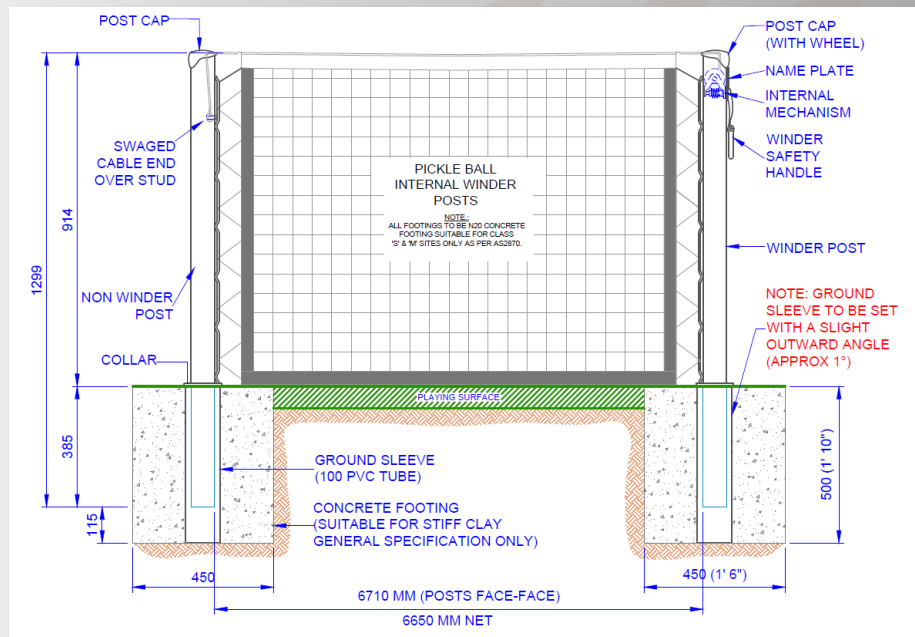
ASSEMBLY INSTRUCTIONS

1. The castor wheels are supplied pre-attached to the posts and the internal winder fittings are also pre-attached to the winder post.
2. Attach the support bar to the posts using the M10 x 100 mm S/S hex head bolts, double flat washer, spring washer and nut.
3. Continue by following the Net Installation Instructions that are relevant to the specific mechanism (Internal Winder or Quick Release Ratchet Specifications)

Product Maintenance

Please apply a small amount of grease to internal mechanisms on a yearly basis or when required. It is advised that the equipment be checked on a regular basis to ensure the bolts remain secure and have not been tampered with. Black Gloss paint can be used to touch up scratched surfaces over a period if need be. This will increase the longevity of the product.

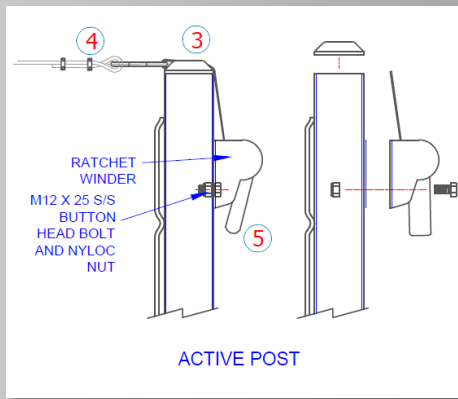
PBI (Internal Winder)



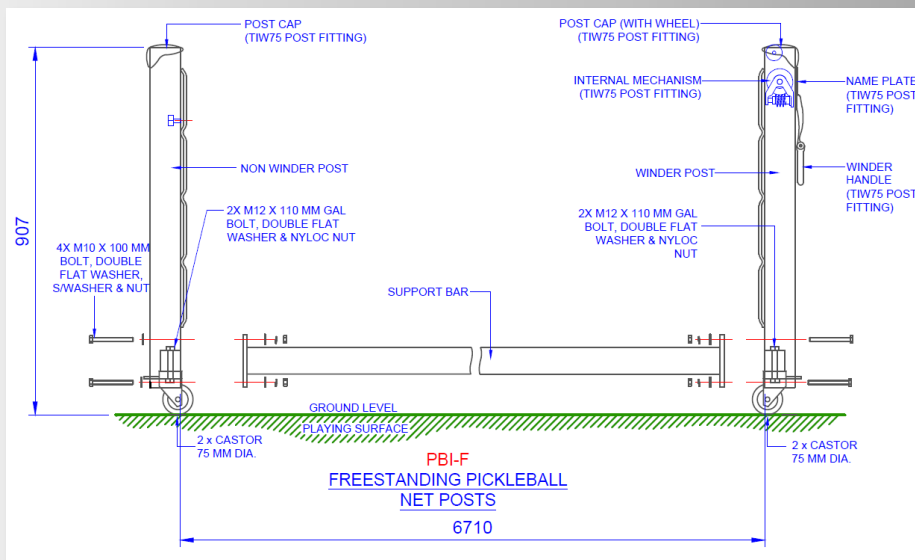
PBR (Quick Release Ratchet)

1. Insert the post into the ground sleeve. Ensure the waverails on each post are facing inwards to each other.
2. Hook one end of the net rope with the eye to hook into the inactive post.
3. Pass the rope over the groove in the inactive post cap and feed the other end of the rope through the groove in the active post, as shown.
4. Then, hook the other end of the rope with the eye to the strap of the Ratchet Winder.
5. Use the Ratchet's Handle to then tighten the net.

THE NET ROPE HAS AN EYE AT BOTH ENDS



PBI-F (Freestanding Posts on Wheels)



07 5593 4494

www.playhardsports.com.au